

# TD SYNnex WebServices – Expense Estimate

---

## Contents

TD SYNnex WebServices Features/Benefits .....	2
Estimate Expense Service .....	2
Getting Started.....	2
Checking Connection via UI .....	3
Security Envelope.....	4
Sample #1: Successful Request (estimateExpense) .....	5
Response .....	5
Sample #2: Un-Successful Request (estimateExpense) .....	6
Response .....	6
Sample #3: Successful Request (estimateExpense) .....	6
Response .....	7
Sample #3: Un-Successful Request (estimateExpense) .....	7
Response .....	8
Sample #4: Successful Request (getAvailableShipMethods) .....	8
Response .....	8
Appendix A – Warehouse List .....	11
US Warehouse List .....	11
Appendix B – TD SYNnex Ship Method Codes List .....	12

# TD SYNnex WebServices – Expense Estimate

---

## TD SYNnex WebServices Features/Benefits

1. Security - Authenticate, authorize, confidential, no-repudiation.
2. Monitor/Tracking - Detailed logs/ Transaction replay.
3. Testing - Auto testing for all logic layers (DAO, service, function testing, integration testing).
4. Support continuous integration (CI).
5. Easy maintainability – Mule server/ Spring framework/Easy integration
6. Logging- Continuous business improvement and performance improvement
7. Support to integrate BPM (Business process Management) into the process.
8. New platform, Current framework for today's business integrations

## Estimate Expense Service

Two services are embedded in this WSDL

### **getAvailableShipMethods**

- Breaks out all available Ship method and Service level codes.
- Basic request requires SKU, QTY, Ship to, Ship from to provide accurate quotation

### **Recommended for:**

- Obtaining Offered Carrier Options for a Product/Ship From/Ship To destination.
- Service projects Carrier options so In Cart/Advance Service level and cost calculations can be obtained during Quoting, which limits call backs or surprise Invoice costs.

### **estimateExpense**

- Estimate Expense service delivers a breakdown of all probable Order expenses.
- Supply SKU, QTY, Ship to and ship From to obtain Shipping, handling, recycling and tax totals.
- Expenses such as Minimum order fee's, transaction charges, COD fees etc are also included

### **Recommended for:**

- Upfront Expense/Fee's/Tax/Recycling visibility

## Production Schemas and Endpoints

US Schema: <https://ws.synnex.com/webservice/eeservice?wsdl>

US Endpoint: <https://ws.us.tdsynnex.com/webservice/eeservice>

CA Schema: <https://ws.synnex.ca/webservice/eeservice?wsdl>

CA Endpoint: <https://ws.ca.tdsynnex.com/webservice/eeservice>

## Testing Schemas and Endpoints

US Schema: <https://testws.synnex.com/webservice/eeservice?wsdl>

US Endpoint: <https://testws.us.tdsynnex.com/webservice/eeservice>

CA Schema: <https://testws.synnex.ca/webservice/eeservice?wsdl>

# TD SYNEX WebServices – Expense Estimate

---

CA Endpoint: <https://ws.ca.tdsynnex.com/webservice/eeservice>

## Getting Started

It's recommended you use a SOAPUI to assist getting up to speed. By using a submitter, you can open visibility immediately to whether your sample code works or not. Your vision is not clouded by whether other service layers within your code are at fault.

When you load up the SoapUI, you can then create a project and add all the WSDL's

TD SYNEX has two websites for listing Webservices transactions.

1. Retrieve Testing WSDLs here:
  - a. <https://www.synnexcorp.com/esolutions/>
  - b. Note: do not submit to above html page, this is where you retrieve WSDLs
2. Testing and Production Domains
  - a. Defined by
    - i. US [https://testws.us.tdsynnex.com/webservices/...](https://testws.us.tdsynnex.com/webservices/)
    - ii. CA [https://testws.ca.tdsynnex.com/webservices/..](https://testws.ca.tdsynnex.com/webservices/)
  - b. After thoroughly testing switch to Production Endpoints:
    - i. US [https://ws.us.tdsynnex.com/webservices/...](https://ws.us.tdsynnex.com/webservices/)
    - ii. CA [https://ws.ca.tdsynnex.com/webservices/..](https://ws.ca.tdsynnex.com/webservices/)
3. Why use Testing endpoints?
  - a. Testing Endpoints point to a closed environment
  - b. It's a closed environment, nothing ships or bills
  - c. Your regular ECX login/pw's work
  - d. Shipping and invoicing must be done manually so you might need assistance getting downstream transactions to work
4. All Transaction WSDLs can be retrieved here:
  - a. US Production environment <https://www.synnexcorp.com/esolutions/>
  - b. Canada Production environment <https://www.synnexcorp.com/esolutions/>
5. Production EndPoints
  - a. Live Production environment
  - b. Use these WSDL's when ready for Production deployment
  - c. Use your regular ECX Login/pw's
  - d. Shipping/Invoicing done per normal Pick/Pack/Ship/invoice

NOTE: Always check back periodically for newer versions of any WSDLs you may be using. Updates are made frequently to improve and add functionality.

Generally a convention of "V02", or "V03" can be found when the WSDL has been upgraded.

## Checking Connection via UI

Basic connection testing and transaction familiarization can be performed by using a SOAPUI.

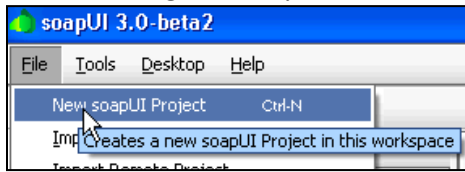
To download a SOAPUI go here: <https://sourceforge.net/projects/soapui/files/> .

Find SOAPUI v3.0-beta 2 and download file "[soapui-3.0-beta-2-windows-bin.zip](#)"

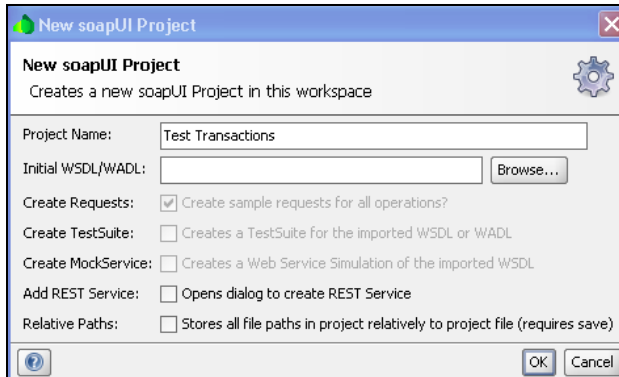
Once you download and install, you might need to adjust your java settings.

# TD SYNEX WebServices – Expense Estimate

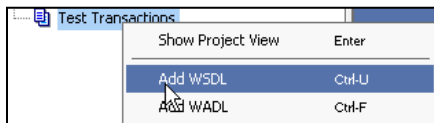
After installing SOAPUI you first must create a new Project (shown below)



Creation of a new project will envelope all individual transaction WSDL's



To add a WSDL to a Project, select "Add WSDL" and copy the WSDL URL from our WebServices Website



## Security Envelope

Each Requires a security envelope be added.

Looks like this:

```
<soapenv:Header>
  <wsse:Security xmlns:wsse="https://docs.oasis-open.org/wss/2004/01/oasis-200401-wss-
wssesecurity-secext-1.0.xsd" soapenv:mustUnderstand="1">
  <wsse:UsernameToken xmlns:wsu="https://docs.oasis-open.org/wss/2004/01/oasis-200401-
wss-wssesecurity-utility-1.0.xsd" wsu:Id="UsernameToken-22676229">
  <wsse:Username>TEST@SYNNEX.COM;123456</wsse:Username>
  <wsse:Password Type="https://docs.oasis-open.org/wss/2004/01/oasis-200401-wss-username-
token-profile-1.0#PasswordText">PWHERE</wsse:Password>
  </wsse:UsernameToken>
</wsse:Security>
</soapenv:Header>
```

Note:

- Insert EC Login name and account# in <wsse:Username> tag (**HIGHLIGHTED**)

# TD SYNEX WebServices – Expense Estimate

---

- Insert EC PW in <wsse:Password> tag (**HIGHLIGHTED**)
- Insert in each WSDL request.

## Sample #1: Successful Request (estimateExpense)

### Missing Ship method code

- Includes Ship Method and Ship from Warehouse
- Though ship method is an optional attribute, if not provided in the Submit Request, the Ship method code must be supplied by a Webstorefront Profile.
- This only applies to customers having a Webstore with TD SYNEX
- If customer does not have a Webstore profile, Shipmethod code is required.
- ShipMethod code can be obtained from the **getAvailableShipMethods** request
- If shipment from a specific warehouse is planned, responses are most accurate if you also provide **shipFromWarehouse** (obtained from PNA Transaction response)

--Insert security token here --

```
<soapenv:Body>
  <exp:estimateExpense>
    <!--Optional:-->
    <arg0>
      <!--Optional:-->
      <shipMethod>fg</shipMethod>
      <!--Optional:-->
      <shipFromWarehouse>DNJ</shipFromWarehouse>
      <shipToZipCode>94538</shipToZipCode>
      <!--1 or more repetitions:-->
      <items>
        <synnexSku>2371925</synnexSku>
        <quantity>1</quantity>
        <euPrice>10</euPrice>
      </items>
    </arg0>
  </exp:estimateExpense>
</soapenv:Body>
</soapenv:Envelope>
```

## Response

```
<soap:Envelope xmlns:soap="https://schemas.xmlsoap.org/soap/envelope/">
  <soap:Body>
    <ns2:estimateExpenseResponse xmlns:ns2="https://expense.model.ws.synnex.com/">
      <return>
        <shipMethod>fg</shipMethod>
        <expense>
          <freight>0.0</freight>
          <recyclingFee>0.0</recyclingFee>
          <tax>18.48</tax>
        </expense>
      </return>
    </ns2:estimateExpenseResponse>
  </soap:Body>
</soap:Envelope>
```

## TD SYNEX WebServices – Expense Estimate

---

```
<otherExpense>0.0</otherExpense>
</expense>
<errorCode>0</errorCode>
</return>
</ns2:estimateExpenseResponse>
</soap:Body>
</soap:Envelope>
```

### Sample #2: Un-Successful Request (estimateExpense)

User has not supplied Ship Method code and this element is not supplied by a storefront profile

--Insert Security token here --

```
<soapenv:Body>
  <exp:estimateExpense>
    <!--Optional:-->
    <arg0>
      <shipToZipCode>94538</shipToZipCode>
      <items>
        <synnexSku>2402658</synnexSku>
        <quantity>1</quantity>
        <euPrice>50.00</euPrice>
      </items>
    </arg0>
  </exp:estimateExpense>
</soapenv:Body>
</soapenv:Envelope>
```

### Response

```
<soap:Envelope xmlns:soap="https://schemas.xmlsoap.org/soap/envelope/">
  <soap:Body>
    <ns2:estimateExpenseResponse xmlns:ns2="https://expense.model.ws.synnex.com/">
      <return>
        <errorMessage>Ship method should provided by customer or configured in storefront
profile</errorMessage>
        <errorCode>65541</errorCode>
      </return>
    </ns2:estimateExpenseResponse>
  </soap:Body>
</soap:Envelope>
```

### Sample #3: Successful Request (estimateExpense)

- Request with **Shipmethod** specified in the request.
- Does not include **ShipFromWarehouse** which could be important if freight were not waived.
- Where distant warehouses are used to fill orders, the accuracy of the quote relies on supplying **carrier** and **shipfromwarehouse** since both cost and delivery time become a factor

## TD SYNnex WebServices – Expense Estimate

---

-- insert security token here --

```
<soapenv:Body>
  <exp:estimateExpense>
    <!--Optional:-->
    <arg0>
      <shipMethod>FG</shipMethod>
      <shipToZipCode>94538</shipToZipCode>
      <items>
        <synnexSku>2402659</synnexSku>
        <quantity>1</quantity>
        <euPrice>50.00</euPrice>
      </items>
    </arg0>
  </exp:estimateExpense>
</soapenv:Body>
</soapenv:Envelope>
```

### Response

```
<soap:Envelope xmlns:soap="https://schemas.xmlsoap.org/soap/envelope/">
  <soap:Body>
    <ns2:getAvailableShipMethodsResponse xmlns:ns2="https://expense.model.ws.synnex.com/">
      <return>
        <availableShipMethods>
          <shipMethod>FG</shipMethod>
          <shipMethodDescription>FG</shipMethodDescription>
          <serviceLevel>1</serviceLevel>
          <freight>3.76</freight>
        </availableShipMethods>
        <errorCode>0</errorCode>
      </return>
    </ns2:getAvailableShipMethodsResponse>
  </soap:Body>
</soap:Envelope>
```

### Sample #3: Un-Successful Request (estimateExpense)

- Missing Zip code

--Insert Security token here --

```
<soapenv:Body>
  <exp:estimateExpense>
    <!--Optional:-->
    <arg0>
      <shipToZipCode>?</shipToZipCode>
      <!--1 or more repetitions:-->
      <items>
```

## TD SYNEX WebServices – Expense Estimate

---

```
<synnexSku>2371925</synnexSku>
  <quantity>1</quantity>
  <euPrice>10</euPrice>
</items>
</arg0>
</exp:estimateExpense>
</soapenv:Body>
</soapenv:Envelope>
```

### Response

```
<soap:Envelope xmlns:soap="https://schemas.xmlsoap.org/soap/envelope/">
  <soap:Body>
    <soap:Fault>
      <faultcode>soap:000000</faultcode>
      <faultstring>Invalid zip code : ?</faultstring>
    </soap:Fault>
  </soap:Body>
</soap:Envelope>
```

### Sample #4: Successful Request (getAvailableShipMethods)

--insert security token here --

```
<soapenv:Body>
  <exp:getAvailableShipMethods>
    <!--Optional:-->
    <arg0>
      <shipToCountry>us</shipToCountry>
      <shipToZipCode>94538</shipToZipCode>
      <!--1 or more repetitions:-->
      <items>
        <synnexSku>2371925</synnexSku>
        <quantity>1</quantity>
        <euPrice>10</euPrice>
      </items>
    </arg0>
  </exp:getAvailableShipMethods>
</soapenv:Body>
</soapenv:Envelope>
```

### Response

```
<soap:Envelope xmlns:soap="https://schemas.xmlsoap.org/soap/envelope/">
  <soap:Body>
    <ns2:getAvailableShipMethodsResponse xmlns:ns2="https://expense.model.ws.synnex.com/">
      <return>
        <availableShipMethods>
```



## TD SYNEX WebServices – Expense Estimate

---

```
<shipMethod>BO</shipMethod>
<shipMethodDescription>Bill Only Invoice</shipMethodDescription>
<serviceLevel>0</serviceLevel>
<freight>0.0</freight>
</availableShipMethods>
<availableShipMethods>
  <shipMethod>COP</shipMethod>
  <shipMethodDescription>Customer Owned Product</shipMethodDescription>
  <serviceLevel>0</serviceLevel>
  <freight>0.0</freight>
</availableShipMethods>
<availableShipMethods>
  <shipMethod>DE</shipMethod>
  <shipMethodDescription>Local Delivery</shipMethodDescription>
  <serviceLevel>0</serviceLevel>
  <freight>30.0</freight>
</availableShipMethods>
<availableShipMethods>
  <shipMethod>DEVN</shipMethod>
  <shipMethodDescription>Dynamex Local Dely Vans</shipMethodDescription>
  <serviceLevel>0</serviceLevel>
  <freight>50.07</freight>
</availableShipMethods>
<availableShipMethods>
  <shipMethod>F2</shipMethod>
  <shipMethodDescription>FedEx 2 Day</shipMethodDescription>
  <serviceLevel>2</serviceLevel>
  <freight>8.0</freight>
</availableShipMethods>
<availableShipMethods>
  <shipMethod>FG</shipMethod>
  <shipMethodDescription>FedEx Ground</shipMethodDescription>
  <serviceLevel>1</serviceLevel>
  <freight>5.76</freight>
</availableShipMethods>
<availableShipMethods>
  <shipMethod>FO</shipMethod>
  <shipMethodDescription>FedEx Standard Overnight</shipMethodDescription>
  <serviceLevel>1</serviceLevel>
  <freight>9.33</freight>
</availableShipMethods>
<availableShipMethods>
  <shipMethod>FP</shipMethod>
  <shipMethodDescription>FedEx Priority Overnight</shipMethodDescription>
  <serviceLevel>1</serviceLevel>
  <freight>10.85</freight>
</availableShipMethods>
<availableShipMethods>
```

## TD SYNEX WebServices – Expense Estimate

---

```
<shipMethod>FS</shipMethod>
<shipMethodDescription>FedEx Saturday Delivery</shipMethodDescription>
<serviceLevel>1</serviceLevel>
<freight>35.57</freight>
</availableShipMethods>
<availableShipMethods>
  <shipMethod>FX</shipMethod>
  <shipMethodDescription>FedEx Express Saver</shipMethodDescription>
  <serviceLevel>3</serviceLevel>
  <freight>6.91</freight>
</availableShipMethods>
<availableShipMethods>
  <shipMethod>U3</shipMethod>
  <shipMethodDescription>UPS 3 Day Select</shipMethodDescription>
  <serviceLevel>3</serviceLevel>
  <freight>10.06</freight>
</availableShipMethods>
<availableShipMethods>
  <shipMethod>UB</shipMethod>
  <shipMethodDescription>UPS 2 Day Air</shipMethodDescription>
  <serviceLevel>2</serviceLevel>
  <freight>16.96</freight>
</availableShipMethods>
<availableShipMethods>
  <shipMethod>UMIF</shipMethod>
  <shipMethodDescription>UPS Mail Innov Flats less 1 lb</shipMethodDescription>
  <serviceLevel>7</serviceLevel>
  <freight>3.05</freight>
</availableShipMethods>
<availableShipMethods>
  <shipMethod>UMIP</shipMethod>
  <shipMethodDescription>UPS Mail Innov Parcel</shipMethodDescription>
  <serviceLevel>7</serviceLevel>
  <freight>7.45</freight>
</availableShipMethods>
<availableShipMethods>
  <shipMethod>UP</shipMethod>
  <shipMethodDescription>UPS Ground</shipMethodDescription>
  <serviceLevel>1</serviceLevel>
  <freight>7.33</freight>
</availableShipMethods>
<availableShipMethods>
  <shipMethod>UR</shipMethod>
  <shipMethodDescription>UPS Next Day Air</shipMethodDescription>
  <serviceLevel>1</serviceLevel>
  <freight>30.46</freight>
</availableShipMethods>
<availableShipMethods>
```

## TD SYNnex WebServices – Expense Estimate

---

```
<shipMethod>URS</shipMethod>
<shipMethodDescription>UPS Next Day Air Saver</shipMethodDescription>
<serviceLevel>1</serviceLevel>
<freight>26.17</freight>
</availableShipMethods>
<availableShipMethods>
  <shipMethod>US</shipMethod>
  <shipMethodDescription>UPS Saturday Delivery</shipMethodDescription>
  <serviceLevel>1</serviceLevel>
  <freight>33.23</freight>
</availableShipMethods>
<availableShipMethods>
  <shipMethod>WHS</shipMethod>
  <shipMethodDescription>Warehouse Select</shipMethodDescription>
  <serviceLevel>0</serviceLevel>
  <freight>1.04</freight>
</availableShipMethods>
<availableShipMethods>
  <shipMethod>ABG</shipMethod>
  <shipMethodDescription>Airborne Ground</shipMethodDescription>
  <serviceLevel>0</serviceLevel>
  <freight>0.0</freight>
</availableShipMethods>
<errorCode>0</errorCode>
</return>
</ns2:getAvailableShipMethodsResponse>
</soap:Body>
</soap:Envelope>
```

### Appendix A – Warehouse List

#### US Warehouse List

Warehouse ID	Name	Address
2	LAS VEGAS WAREHOUSE	NORTH LAS VEGAS, NV 89030
3	FREMONT WAREHOUSE	FREMONT, CA 94539
4	ATLANTA WAREHOUSE	NORCROSS, GA 30071
505	FORT WORTH WAREHOUSE	FORT WORTH, TX 76177
6	CHICAGO WAREHOUSE	GLENDALE HTS, IL 60139
7	MISSISSIPPI WAREHOUSE	OLIVE BRANCH, MS 38654
8	NEW JERSEY WAREHOUSE	LYNDHURST, NJ 07071
9	VIRGINIA WAREHOUSE	CHANTILLY, VA 20151
10	OREGON WAREHOUSE	BEAVERTON, OR 97008
11	LOS ANGELES WAREHOUSE	CITY OF INDUSTRY, CA 91789
12	CARSON WAREHOUSE	CARSON, CA 90810
14	COLUMBUS WAREHOUSE	COLUMBUS, OH 43123

## TD SYNEX WebServices – Expense Estimate

16	MIAMI WAREHOUSE	MIAMI, FL 33172
----	-----------------	-----------------

### Canada Warehouse List

<i>Warehouse ID</i>	<i>Name</i>	<i>Address</i>
6	CHICAGO WAREHOUSE (Joint US/Canada Warehouse)	GLENDAL HTS, IL 60139
26	HALIFAX WAREHOUSE	HALIFAX, N.S. B3S 1B3
29	METRO TORONTO WAREHOUSE	Guelph Ontario N1H 6J3
31	CALGARY WAREHOUSE	CALGARY, AB, T2C 4X3
81	RICHMOND WAREHOUSE	RICHMOND, BC, V6W 1G3

## Appendix B – TD SYNEX Ship Method Codes List

Please Note: Not all carriers are available in your delivery area.

Please check with your TD SYNEX sales rep if you are unsure which carrier is available to you to resource.

### United States

Ship Code	Ship Method Description
AB	Airborne Next Afternoon
AB2	Airborne Express 2 Day
ABFT	ABF Timekeeper
ABG	Airborne Ground
ABP	Airborne Express Priority Over
ABS	Airborne Express Saturday Del
AIP	AIT White Glove (TV < 56in)
AIP2	AIT White Glove (TV > 56in)
AIT	AIT Economy 3-5 Day Service
AIT1	AIT One Day Service by 5PM
AIT2	AIT 2 Day Service by 5PM
AIT5	AIT Spot Rate
AVEX	Averitt Express
BAX1	BAX Global One Day Service
BAX2	BAX Global Two Day Service
CD	Circle Delivery
CEFL	CENTRAL FREIGHT LINES
CHR	C.H. Robinson
CHRS	C.H. Robinson TL Spot Rate
CSTN	Cornerstone TL
CSTS	Cornerstone TL Spot Rate
CTFL	Central Freight Lines
CTS	CTS TL
CTSS	CTS TL Spot Rate
DDMS	Dynamex Spot Rate
DE	Local Delivery
DE2	Local Delivery (2nd order)

Ship Code	Ship Method Description
EXDO	Expeditors Int'l
EXPS	Expeditors Spot Rate
F2	FedEx 2 Day
F2F	FedEx 2 Day Freight
FG	FedEx Ground
FO	FedEx Standard Over
FP	FedEx Priority Over
FPF	FedEx Priority Over Frt.
FPFI	FedEx Priority Intl Frt.
FPI	FedEx Priority Intl
FPIC	FedEx Priority Intl CWT
FPIN	FedEx Priority Intl
FS	FedEx Saturday Del
FX	FedEx Saver
FXF	FedEx Ex Saver Freight
FXFE	FedEx Freight Regional
FXFI	FedEx Freight Economy Intl
FXIC	FedEx Intl Economy CWT
FXIN	FedEx Intl Economy
FXNL	FedEx National LTL Spot Rate
GEO	Geologistics
GITK	GI Trucking
GTWS	Gateway TL Spot Rate
GTWY	Gateway TL
LMEX	Lakeville Motor Express
MERS	MERIT Transportation
MERT	MERIT TL

## TD SYNEX WebServices – Expense Estimate

DEHV	Local Delivery (High Volume)
DETR	Dynamex Local Delivery (Pallets)
DEVN	Dynamex Local Delivery (Vans)
DH	DHL
DHI	DHL International
DHL2	DHL 2 Day
DHLP	DHL Overnight
DHXS	DEPENDABLE Hawaiian Express
E1	Eagle Next Day
E2	Eagle 2nd Day
E3	Eagle 3-5 DAY
EDEL	Electronic Delivery (Email)
ESTE	Estes Express

MLO	MENLO Logistics Ground
MLO1	MENLO Logistics 1-Day Svc
MLO2	MENLO Logistics 2-Day Svc
NEMF	New England Motor Freight
NSWG	Non-Stop Dlvry White Glove Svc
NYK	NYK Logistics
NYKS	NYK Logistics Spot Rate
PDQ	PDQ TL Express
PDQS	PDQ TL Spot Rate
PRTY	PRIORITY TL
PSST	PSS TL
PUA	Purolator Air
PUG	Purolator Ground

Ship Code	Ship Method Description
RDWY	Roadway LTL
RKG	AIT Rack Ground - White Glove
RPM	RPM TL
RPMS	RPM Spot Rate (for CA, NV, AZ)
U3	UPS 3 Day Select
UB	UPS 2 Day Air
UH	UPS Ground CWT
UHEP	UPS Worldwide Express
UHEX	UPS Worldwide Expedited
UHW1	UPS Next Day CWT
UHW2	UPS 2 Day Air CWT
UHW3	UPS 3 Day Air CWT
UHXP	UPS Worldwide Express Saver
UP	UPS Ground
UPEP	UPS Worldwide Express

Ship Code	Ship Method Description
UPEX	UPS Worldwide Expedited
UPSA	UPS Standard (to Canada)
UPXP	UPS Worldwide Express Saver
UR	UPS Next Day Air
URS	UPS Next Day Air Saver
US	UPS Saturday Del
USPM	US Priority Mail
VD	VENDOR DELIVERY
WC	TD SYNEX Will Call
WF	Watkins Freight
WF1	Watkins Freight 1-Day Service
WF2	Watkins Freight 2-Day Service
WHS	Warehouse Select
WRDS	Western Regional Delivery

Canada

Ship Code	Ship Method Description
B45	Before 5PM Same Day
BF5	Dynamex Exp - B4 5PM Same Day
DAR	Day and Ross Inc.
DART	Day and Ross Inc. TL
DSV	Drop Ship Vendor
EDEL	Electronic Delivery (email)
FDXH	FedEx Overnight (Heavyweight)
FIPH	FedEx Intl Priority (Overweight)
ISC	ISAAC Freight
KNH	K&H Dispatch
MTR	Midland Transport
MTRT	Midland Transport TL

Ship Code	Ship Method Description
PRG	Purolator Rural Ground
PSA	Purolator (Saturday)
PUA	Purolator (Air)
PUG	Purolator (Ground)
QR1	Quik-Run Courier (Same Day)
QR2	Quik-Run Courier (Overnight)
QR3	Quik-Run Courier (Same Day)
SDL	Dynamex Exp - Same Day Local
SDS	Dynamex Exp - Same Day Direct
SDT	Sameday Truck
ST2	Strait Consolidate Stx
STX	Strait Express

## TD SYNnex WebServices – Expense Estimate

---

OXR	Onward Express (Rush)
OXS	Onward Express (Same Day)
P10	10:30AM PUROLATOR
P9A	9 AM PUROLATOR
PAT	Pats Cartage
PATS	Pats Cartage (Courier)

UPG	UPS STANDARD
UPS	UPS INBOUND ONLY (IB)
UPX	UPS EXPRESS
WC	PICK-UP
WHS	Warehouse Select