

TD SYNEX WebServices – Price/Availability V05

Table of Contents

TD SYNEX WebServices Features/Benefits	2
PNA Service	2
Getting Started.....	2
Checking Connection via UI	3
Security Envelope.....	4
Request Examples	5
Sample #1: Successful Request – Total Inventory	5
Request	5
Response	5
Sample #2: Successful Request – Inventory by All Warehouses.....	9
Request	9
Response	9
Sample #3: Successful Request – Inventory by Warehouses (Detailed).....	13
Request	13
Response	14
Data Dictionary	20
Warehouse Listings	21

TD SYNnex WebServices – Price/Availability V05

TD SYNnex WebServices Features/Benefits

1. Security - Authenticate, authorize, confidential, no-repudiation.
2. Monitor/Tracking - Detailed logs/ Transaction replay.
3. Testing - Auto testing for all logic layers (DAO, service, function testing, integration testing).
4. Support continuous integration (CI).
5. Easy maintainability – Mule server/ Spring framework/Easy integration
6. Logging- Continuous business improvement and performance improvement
7. Support to integrate BPM (Business process Management) into the process.
8. New platform, Current framework for today's business integrations

PNA Service

The Price/Availability webservice acts in a similar fashion to ECEExpress Real time Price availability.

This service is geared toward submitting a single or batch of sku's to obtain the latest price and availability across all TD SYNnex warehouses.

The reply provided by the service, will show each Warehouse broken out with individual Inventory #.

<totalQuantity> is also provided, this is a cumulative Inventory # across all warehouses.

Each Warehouse address, zip and warehouse code are provided.

These values are important in later transactions, such as PO submit where a customer might want to specify a Ship From Warehouse.

Production Schemas and Endpoints

US Schema: <https://ws.synnex.com/webservice/pnaserviceV05?wsdl>

US Endpoint: <https://ws.us.tdsynnex.com/webservice/pnaserviceV05>

CA Schema: <https://ws.synnex.ca/webservice/pnaserviceV05?wsdl>

CA Endpoint: <https://ws.ca.tdsynnex.com/webservice/pnaserviceV05>

Testing Schemas and Endpoints

US Schema: <https://testws.synnex.com/webservice/pnaserviceV05?wsdl>

US Endpoint: <https://testws.us.tdsynnex.com/webservice/pnaserviceV05>

CA Schema: <https://testws.synnex.ca/webservice/pnaserviceV05?wsdl>

CA Endpoint: <https://testws.ca.tdsynnex.com/webservice/pnaserviceV05>

Getting Started

It's recommended you use a SOAPUI to assist getting up to speed.

TD SYNEX WebServices – Price/Availability V05

By using a submitter, you can open visibility immediately to whether your sample code works or not. Your vision is not clouded by whether other service layers within your code are at fault.

When you load up the SoapUI, you can then create a project and add all the WSDL's

TD SYNEX has two websites for listing Webservices transactions.

1. Retrieve Testing WSDLs here:
 - a. <https://www.synnecorp.com/esolutions/>
 - b. Note: do not submit to above html page, this is where you retrieve WSDLs
2. Testing and Production Domains
 - a. Defined by
 - i. US [https://testws.us.tdsynnex.com/webservices/...](https://testws.us.tdsynnex.com/webservices/)
 - ii. CA [https://testws.ca.tdsynnex.com/webservices/..](https://testws.ca.tdsynnex.com/webservices/)
 - b. After thoroughly testing switch to Production Endpoints:
 - i. US [https://ws.us.tdsynnex.com/webservices/...](https://ws.us.tdsynnex.com/webservices/)
 - ii. CA [https://ws.ca.tdsynnex.com/webservices/..](https://ws.ca.tdsynnex.com/webservices/)
3. Why use Testing endpoints?
 - a. Testing Endpoints point to a closed environment
 - b. It's a closed environment, nothing ships or bills
 - c. Your regular ECX login/pw's work
 - d. Shipping and invoicing must be done manually so you might need assistance getting downstream transactions to work
4. All Transaction WSDLs can be retrieved here:
 - a. US Production environment <https://www.synnecorp.com/esolutions/>
 - b. Canada Production environment <https://www.synnecorp.com/esolutions/>
5. Production EndPoints
 - a. Live Production environment
 - b. Use these WSDL's when ready for Production deployment
 - c. Use your regular ECX Login/pw's
 - d. Shipping/Invoicing done per normal Pick/Pack/Ship/invoice

NOTE: Always check back periodically for newer versions of any WSDLs you may be using. Updates are made frequently to improve and add functionality.

Generally a convention of "V02", or "V03" can be found when the WSDL has been upgraded.

Checking Connection via UI

Basic connection testing and transaction familiarization can be performed by using a SOAPUI.

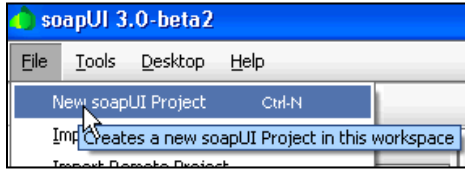
To download a SOAPUI go here: <https://sourceforge.net/projects/soapui/files/> .

Find SOAPUI v3.0-beta 2 and download file "[soapui-3.0-beta-2-windows-bin.zip](#)"

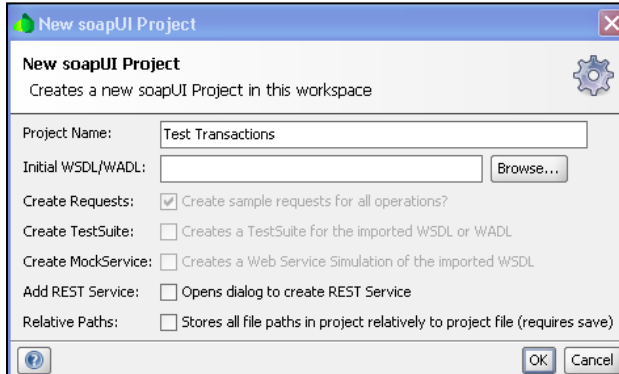
Once you download and install, you might need to adjust your java settings.

After installing SOAPUI you first must create a new Project (shown below)

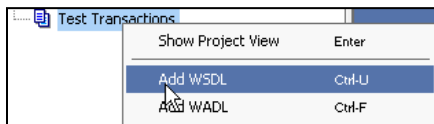
TD SYNnex WebServices – Price/Availability V05



Creation of a new project will envelope all individual transaction WSDL's



To add a WSDL to a Project, select "Add WSDL" and copy the WSDL URL from our WebServices Website



Security Envelope

Each Requires a security envelope be added.

Looks like this:

```
<soapenv:Header>
  <wsse:Security xmlns:wsse="https://docs.oasis-open.org/wss/2004/01/oasis-200401-wss-
wssesecurity-secext-1.0.xsd" soapenv:mustUnderstand="1">
    <wsse:UsernameToken xmlns:wsu="https://docs.oasis-open.org/wss/2004/01/oasis-200401-
wss-wssesecurity-utility-1.0.xsd" wsu:Id="UsernameToken-22676229">
      <wsse:Username>TEST@SYNNEX.COM;123456</wsse:Username>
      <wsse:Password Type="https://docs.oasis-open.org/wss/2004/01/oasis-200401-wss-username-
token-profile-1.0#PasswordText">PWHERE</wsse:Password>
    </wsse:UsernameToken>
  </wsse:Security>
</soapenv:Header>
```

Note:

- Insert EC Login name and account# in <wsse:Username> tag (**HIGHLIGHTED**)
- Insert EC PW in <wsse:Password> tag (**HIGHLIGHTED**)
- Insert in each WSDL request.

TD SYNEX WebServices – Price/Availability V05

Request Examples

Sample #1: Successful Request – Total Inventory Including MSRP

Note: To Maintain high performance, we recommend using Inventory by Warehouse calls only when individual Warehouse breakout is need.

Also, in case of regional supplies, if your primary warehouse is local and you generally ship from a Master and local warehouse your customers, use those warehouse calls directly, excluding far warehouses which aren't a supply factor.

These call types are broken out in each example.

This Example uses <warehouse>ALL</warehouse> to pull only Total Inventory

End point: <https://ws.ca.tdsynnex.com/webservice/pnaserviceV05>

Schema: <https://ws.synnex.ca/webservice/pnaserviceV05?wsdl>

Request

```
<soapenv:Envelope xmlns:soapenv="https://schemas.xmlsoap.org/soap/envelope/"
xmlns:pnav="https://pnaV05.model.ws.synnex.com/">
<soapenv:Header>
→ Insert security token ←
</soapenv:Header>
<soapenv:Body>
  <pnav:getPriceAvailability>
    <!--Optional:-->
    <arg0>
      <!--Zero or more repetitions:-->
      <skuList><synnexSku>4390907</synnexSku></skuList>
<skuList><synnexSku>4405256</synnexSku></skuList>
<skuList><synnexSku>4412099</synnexSku></skuList>
<skuList><synnexSku>4412104</synnexSku></skuList>
<skuList><synnexSku>4412106</synnexSku></skuList>
<skuList><synnexSku>4416851</synnexSku></skuList>
<skuList><synnexSku>4416707</synnexSku></skuList>
<skuList><synnexSku>4418661</synnexSku></skuList>
<skuList><synnexSku>4418632</synnexSku></skuList>
      <warehouse>ALL</warehouse>
    </arg0>
  </pnav:getPriceAvailability>
</soapenv:Body>
</soapenv:Envelope>
```

Response

```
<soap:Envelope xmlns:soap="https://schemas.xmlsoap.org/soap/envelope/">
<soap:Body>
  <ns2:getPriceAvailabilityResponse xmlns:ns2="https://pnaV05.model.ws.synnex.com/">
    <return>
```

TD SYNnex WebServices – Price/Availability V05

<priceAvail>
<synnexSku>4390907</synnexSku>
<mfgPartNo>6138A1U</mfgPartNo>
<status>ACTIVE</status>
<description>TC M58P 3.00GHZ 2GB 160GB VBB3</description>
<currency>CAD</currency>
<price>1044.0200</price>
<discount>2.5000</discount>
<totalQty>0</totalQty>
<totalOnOrder>0</totalOnOrder>
<totalBO>0</totalBO>

<msrp>39.0000</msrp>

</priceAvail>

<priceAvail>
<synnexSku>4405256</synnexSku>
<mfgPartNo>6234A1U</mfgPartNo>
<status>ACTIVE</status>
<description>TC M58P 3.00GHZ 2GB 160GB VBB3</description>
<currency>CAD</currency>
<price>1112.4200</price>
<discount>2.6700</discount>
<totalQty>0</totalQty>
<totalOnOrder>0</totalOnOrder>
<totalBO>0</totalBO>

<msrp>39.0000</msrp>

</priceAvail>

<priceAvail>
<synnexSku>4412099</synnexSku>
<mfgPartNo>8910AEF</mfgPartNo>
<status>ACTIVE</status>
<description>TC M58 2.9GHZ 1GB 160GB VBB 8910AEF FR</description>
<currency>CAD</currency>
<price>822.3300</price>
<discount>16.0000</discount>
<totalQty>0</totalQty>
<totalOnOrder>0</totalOnOrder>
<totalBO>0</totalBO>

<msrp>39.0000</msrp>

</priceAvail>

<priceAvail>
<synnexSku>4412104</synnexSku>

TD SYNnex WebServices – Price/Availability V05

<mfgPartNo>9960AGF</mfgPartNo>
<status>ACTIVE</status>
<description>TC M58 2.9GHZ 1GB 160GB VBB 9960AGF FR</description>
<currency>CAD</currency>
<price>822.3300</price>
<discount>16.0000</discount>
<totalQty>0</totalQty>
<totalOnOrder>0</totalOnOrder>
<totalBO>0</totalBO>

<msrp>39.0000</msrp>

</priceAvail>

<priceAvail>

<synnexSku>4412106</synnexSku>
<mfgPartNo>8820A9F</mfgPartNo>
<status>ACTIVE</status>
<description>TC M58 2.9GHZ 1GB 160GB VBB 8820A9F FR</description>
<currency>CAD</currency>
<price>859.3300</price>
<discount>16.7200</discount>
<totalQty>0</totalQty>
<totalOnOrder>0</totalOnOrder>
<totalBO>0</totalBO>

<msrp>39.0000</msrp>

</priceAvail>

<priceAvail>

<synnexSku>4416851</synnexSku>
<mfgPartNo>7479A6U</mfgPartNo>
<status>ACTIVE</status>
<description>TC M58P 3.0GHZ 2GB 160GB VBB32 7479A6U</description>
<currency>CAD</currency>
<price>1008.1000</price>
<discount>2.4200</discount>
<totalQty>0</totalQty>
<totalOnOrder>0</totalOnOrder>
<totalBO>0</totalBO>

<msrp>39.0000</msrp>

</priceAvail>

<priceAvail>

<synnexSku>4416707</synnexSku>
<mfgPartNo>7484AEU</mfgPartNo>
<status>ACTIVE</status>

TD SYNnex WebServices – Price/Availability V05

```
<description>TC M58P 3.0GHZ 2GB 160GB VBB32 7484AEU</description>
<currency>CAD</currency>
<price>1005.5400</price>
<discount>2.4100</discount>
<totalQty>0</totalQty>
<totalOnOrder>0</totalOnOrder>
<totalBO>0</totalBO>

<msrp>39.0000</msrp>

</priceAvail>
<priceAvail>
  <synnexSk>4418661</synnexSk>
  <mfgPartNo>9486A1U</mfgPartNo>
  <status>ACTIVE</status>
  <description>TC A62 2.8GHZ 2GB 160GB VBB32 9486A1U</description>
  <currency>CAD</currency>
  <price>649.8400</price>
  <discount>1.5600</discount>
  <totalQty>0</totalQty>
  <totalOnOrder>0</totalOnOrder>
  <totalBO>0</totalBO>

  <msrp>39.0000</msrp>

</priceAvail>
<priceAvail>
  <synnexSk>4418632</synnexSk>
  <mfgPartNo>9486A4U</mfgPartNo>
  <status>ACTIVE</status>
  <description>TC A62 2.7GHZ 1GB 160GB VBB32 9486A4U</description>
  <currency>CAD</currency>
  <price>703.7100</price>
  <discount>1.6900</discount>
  <totalQty>0</totalQty>
  <totalOnOrder>0</totalOnOrder>
  <totalBO>0</totalBO>

  <msrp>39.0000</msrp>

</priceAvail>
</return>
</ns2:getPriceAvailabilityResponse>
</soap:Body>
</soap:Envelope>
```


TD SYNnex WebServices – Price/Availability V05

Sample #2: Successful Request – Inventory by All Warehouses including MSRP

Note: To Maintain high performance, we recommend using Inventory by Warehouse calls only when individual Warehouse breakout is need.

Also, in case of regional supplies, if your primary warehouse is local and you generally ship from a Master and local warehouse your customers, use those warehouse calls directly, excluding far warehouses which aren't a supply factor.

These call types are broken out in each example.

This example uses: <warehouse>DGU</warehouse> to request inventory for specific Warehouse Locations (In this case Guelph). For a Complete list, please see [Warehouse List](#) below

End point: <https://ws.ca.tdsynnex.com/webservice/pnaserviceV05>

Schema: <https://ws.synnex.ca/webservice/pnaserviceV05?wsdl>

Request

```
<soapenv:Envelope xmlns:soapenv="https://schemas.xmlsoap.org/soap/envelope/"
xmlns:pnav="https://pnaV05.model.ws.synnex.com/">
<soapenv:Header>
→ Insert security token ←
</soapenv:Header>
<soapenv:Body>
  <pnav:getPriceAvailability>
    <!--Optional:-->
    <arg0>
      <!--Zero or more repetitions:-->
      <skuList><synnexSku>4390907</synnexSku></skuList>
<skuList><synnexSku>4405256</synnexSku></skuList>
<skuList><synnexSku>4412099</synnexSku></skuList>
<skuList><synnexSku>4412104</synnexSku></skuList>
<skuList><synnexSku>4412106</synnexSku></skuList>
<skuList><synnexSku>4416851</synnexSku></skuList>
<skuList><synnexSku>4416707</synnexSku></skuList>
<skuList><synnexSku>4418661</synnexSku></skuList>
<skuList><synnexSku>4418632</synnexSku></skuList>
      <warehouse>DGU</warehouse>
    </arg0>
  </pnav:getPriceAvailability>
</soapenv:Body>
</soapenv:Envelope>
```

Response

```
<soap:Envelope xmlns:soap="https://schemas.xmlsoap.org/soap/envelope/">
<soap:Body>
  <ns2:getPriceAvailabilityResponse xmlns:ns2="https://pnaV05.model.ws.synnex.com/">
    <return>
      <priceAvail>
```

TD SYNnex WebServices – Price/Availability V05

<synnexSku>4390907</synnexSku>
<mfgPartNo>6138A1U</mfgPartNo>
<status>ACTIVE</status>
<description>TC M58P 3.00GHZ 2GB 160GB VBB3</description>
<currency>CAD</currency>
<price>1044.0200</price>
<discount>2.5000</discount>
<totalQty>0</totalQty>
<totalOnOrder>0</totalOnOrder>
<totalBO>0</totalBO>

<msrp>39.0000</msrp>

</priceAvail>

<priceAvail>

<synnexSku>4405256</synnexSku>
<mfgPartNo>6234A1U</mfgPartNo>
<status>ACTIVE</status>
<description>TC M58P 3.00GHZ 2GB 160GB VBB3</description>
<currency>CAD</currency>
<price>1112.4200</price>
<discount>2.6700</discount>
<totalQty>0</totalQty>
<totalOnOrder>0</totalOnOrder>
<totalBO>0</totalBO>

<msrp>39.0000</msrp>

</priceAvail>

<priceAvail>

<synnexSku>4412099</synnexSku>
<mfgPartNo>8910AEF</mfgPartNo>
<status>ACTIVE</status>
<description>TC M58 2.9GHZ 1GB 160GB VBB 8910AEF FR</description>
<currency>CAD</currency>
<price>822.3300</price>
<discount>16.0000</discount>
<totalQty>0</totalQty>
<totalOnOrder>0</totalOnOrder>
<totalBO>0</totalBO>

<msrp>39.0000</msrp>

<stock code="DGU ">

<available>0</available>

<onOrder>0</onOrder>

<bo>0</bo>

TD SYNnex WebServices – Price/Availability V05

```
</stock>
</priceAvail>
<priceAvail>
  <synnexSku>4412104</synnexSku>
  <mfgPartNo>9960AGF</mfgPartNo>
  <status>ACTIVE</status>
  <description>TC M58 2.9GHZ 1GB 160GB VBB 9960AGF FR</description>
  <currency>CAD</currency>
  <price>822.3300</price>
  <discount>16.0000</discount>
  <totalQty>0</totalQty>
  <totalOnOrder>0</totalOnOrder>
  <totalBO>0</totalBO>
```

```
<msrp>39.0000</msrp>
```

```
<stock code="DGU ">
  <available>0</available>
  <onOrder>0</onOrder>
  <bo>0</bo>
```

```
</stock>
</priceAvail>
<priceAvail>
  <synnexSku>4412106</synnexSku>
  <mfgPartNo>8820A9F</mfgPartNo>
  <status>ACTIVE</status>
  <description>TC M58 2.9GHZ 1GB 160GB VBB 8820A9F FR</description>
  <currency>CAD</currency>
  <price>859.3300</price>
  <discount>16.7200</discount>
  <totalQty>0</totalQty>
  <totalOnOrder>0</totalOnOrder>
  <totalBO>0</totalBO>
```

```
<msrp>39.0000</msrp>
```

```
<stock code="DGU ">
  <available>0</available>
  <onOrder>0</onOrder>
  <bo>0</bo>
```

```
</stock>
</priceAvail>
<priceAvail>
  <synnexSku>4416851</synnexSku>
  <mfgPartNo>7479A6U</mfgPartNo>
  <status>ACTIVE</status>
  <description>TC M58P 3.0GHZ 2GB 160GB VBB32 7479A6U</description>
```

TD SYNnex WebServices – Price/Availability V05

<currency>CAD</currency>
<price>1008.1000</price>
<discount>2.4200</discount>
<totalQty>0</totalQty>
<totalOnOrder>0</totalOnOrder>
<totalBO>0</totalBO>

<msrp>39.0000</msrp>

</priceAvail>

<priceAvail>

<synnexSku>4416707</synnexSku>
<mfgPartNo>7484AEU</mfgPartNo>
<status>ACTIVE</status>
<description>TC M58P 3.0GHZ 2GB 160GB VBB32 7484AEU</description>
<currency>CAD</currency>
<price>1005.5400</price>
<discount>2.4100</discount>
<totalQty>0</totalQty>
<totalOnOrder>0</totalOnOrder>
<totalBO>0</totalBO>

<msrp>39.0000</msrp>

</priceAvail>

<priceAvail>

<synnexSku>4418661</synnexSku>
<mfgPartNo>9486A1U</mfgPartNo>
<status>ACTIVE</status>
<description>TC A62 2.8GHZ 2GB 160GB VBB32 9486A1U</description>
<currency>CAD</currency>
<price>649.8400</price>
<discount>1.5600</discount>
<totalQty>0</totalQty>
<totalOnOrder>0</totalOnOrder>
<totalBO>0</totalBO>

<msrp>39.0000</msrp>

</priceAvail>

<priceAvail>

<synnexSku>4418632</synnexSku>
<mfgPartNo>9486A4U</mfgPartNo>
<status>ACTIVE</status>
<description>TC A62 2.7GHZ 1GB 160GB VBB32 9486A4U</description>
<currency>CAD</currency>
<price>703.7100</price>

TD SYNEX WebServices – Price/Availability V05

```
<discount>1.6900</discount>
<totalQty>0</totalQty>
<totalOnOrder>0</totalOnOrder>
<totalBO>0</totalBO>

<msrp>39.0000</msrp>

</priceAvail>
</return>
</ns2:getPriceAvailabilityResponse>
</soap:Body>
</soap:Envelope>
```

Sample #3: Successful Request – Inventory by Warehouses (Detailed) including MSRP

Note: To Maintain high performance, we recommend using Inventory by Warehouse calls only when individual Warehouse breakout is need.

Also, in case of regional supplies, if your primary warehouse is local and you generally ship from a Master and local warehouse your customers, use those warehouse calls directly, excluding far warehouses which aren't a supply factor.

These call types are broken out in each example. This example uses <warehouse>ANY</warehouse> to request Detailed inventory by Warehouse.

This Request provides the most detail but also response with the highest byte counts due to the amount of data in the response. Its suggested this be used minimally to maximize transaction response performance.

End point: <https://ws.ca.tdsynnex.com/webservice/pnaserviceV05>

Schema: <https://ws.synnex.ca/webservice/pnaserviceV05?wsdl>

Request

```
<soapenv:Envelope xmlns:soapenv="https://schemas.xmlsoap.org/soap/envelope/"
xmlns:pnav="https://pnaV05.model.ws.synnex.com/">
<soapenv:Header>
→ Insert security token ←
</soapenv:Header>
<soapenv:Body>
<pnav:getPriceAvailability>
  <!--Optional:-->
  <arg0>
    <!--Zero or more repetitions:-->
    <skuList><synnexSku>4390907</synnexSku></skuList>
<skuList><synnexSku>4405256</synnexSku></skuList>
<skuList><synnexSku>4412099</synnexSku></skuList>
<skuList><synnexSku>4412104</synnexSku></skuList>
<skuList><synnexSku>4412106</synnexSku></skuList>
```

TD SYNnex WebServices – Price/Availability V05

```
<skuList><synnexSku>4416851</synnexSku></skuList>
<skuList><synnexSku>4416707</synnexSku></skuList>
<skuList><synnexSku>4418661</synnexSku></skuList>
<skuList><synnexSku>4418632</synnexSku></skuList>
  <warehouse>ANY</warehouse>
</arg0>
</pnav:getPriceAvailability>
</soapenv:Body>
</soapenv:Envelope>
```

Response

```
<soap:Envelope xmlns:soap="https://schemas.xmlsoap.org/soap/envelope/">
  <soap:Body>
    <ns2:getPriceAvailabilityResponse xmlns:ns2="https://pnaV05.model.ws.synnex.com/">
      <return>
        <priceAvail>
          <synnexSku>4390907</synnexSku>
          <mfgPartNo>6138A1U</mfgPartNo>
          <status>ACTIVE</status>
          <description>TC M58P 3.00GHZ 2GB 160GB VBB3</description>
          <currency>CAD</currency>
          <price>1044.0200</price>
          <discount>2.5000</discount>
          <totalQty>0</totalQty>
          <totalOnOrder>0</totalOnOrder>
          <totalBO>0</totalBO>

          <msrp>39.0000</msrp>

          <stock code="DCH ">
            <available>0</available>
            <onOrder>0</onOrder>
            <bo>0</bo>
          </stock>
          <stock code="DTN ">
            <available>0</available>
            <onOrder>0</onOrder>
            <bo>0</bo>
          </stock>
        </priceAvail>
        <priceAvail>
          <synnexSku>4405256</synnexSku>
          <mfgPartNo>6234A1U</mfgPartNo>
          <status>ACTIVE</status>
          <description>TC M58P 3.00GHZ 2GB 160GB VBB3</description>
          <currency>CAD</currency>
          <price>1112.4200</price>
          <discount>2.6700</discount>
```

TD SYNnex WebServices – Price/Availability V05

<totalQty>0</totalQty>
<totalOnOrder>0</totalOnOrder>
<totalBO>0</totalBO>

<msrp>39.0000</msrp>

<stock code="DCH ">
 <available>0</available>
 <onOrder>0</onOrder>
 <bo>0</bo>

</stock>

<stock code="DTN ">
 <available>0</available>
 <onOrder>0</onOrder>
 <bo>0</bo>

</stock>

</priceAvail>

<priceAvail>

 <synnexSku>4412099</synnexSku>
 <mfgPartNo>8910AEF</mfgPartNo>
 <status>ACTIVE</status>
 <description>TC M58 2.9GHZ 1GB 160GB VBB 8910AEF FR</description>
 <currency>CAD</currency>
 <price>822.3300</price>
 <discount>16.0000</discount>
 <totalQty>0</totalQty>
 <totalOnOrder>0</totalOnOrder>
 <totalBO>0</totalBO>

<msrp>39.0000</msrp>

<stock code="DCH ">
 <available>0</available>
 <onOrder>0</onOrder>
 <bo>0</bo>

</stock>

<stock code="DTN ">
 <available>0</available>
 <onOrder>0</onOrder>
 <bo>0</bo>

</stock>

<stock code="DHA ">
 <available>0</available>
 <onOrder>0</onOrder>
 <bo>0</bo>

</stock>

<stock code="DGU ">

TD SYNnex WebServices – Price/Availability V05

```
<available>0</available>
<onOrder>0</onOrder>
<bo>0</bo>
</stock>
<stock code="DCG ">
  <available>0</available>
  <onOrder>0</onOrder>
  <bo>0</bo>
</stock>
</priceAvail>
<priceAvail>
  <synnexSku>4412104</synnexSku>
  <mfgPartNo>9960AGF</mfgPartNo>
  <status>ACTIVE</status>
  <description>TC M58 2.9GHZ 1GB 160GB VBB 9960AGF FR</description>
  <currency>CAD</currency>
  <price>822.3300</price>
  <discount>16.0000</discount>
  <totalQty>0</totalQty>
  <totalOnOrder>0</totalOnOrder>
  <totalBO>0</totalBO>

  <msrp>39.0000</msrp>

  <stock code="DCH ">
    <available>0</available>
    <onOrder>0</onOrder>
    <bo>0</bo>
  </stock>
  <stock code="DTN ">
    <available>0</available>
    <onOrder>0</onOrder>
    <bo>0</bo>
  </stock>
  <stock code="DHA ">
    <available>0</available>
    <onOrder>0</onOrder>
    <bo>0</bo>
  </stock>
  <stock code="DGU ">
    <available>0</available>
    <onOrder>0</onOrder>
    <bo>0</bo>
  </stock>
  <stock code="DCG ">
    <available>0</available>
    <onOrder>0</onOrder>
    <bo>0</bo>
```


TD SYNnex WebServices – Price/Availability V05

```
</stock>
</priceAvail>
<priceAvail>
  <synnexSku>4412106</synnexSku>
  <mfgPartNo>8820A9F</mfgPartNo>
  <status>ACTIVE</status>
  <description>TC M58 2.9GHZ 1GB 160GB VBB 8820A9F FR</description>
  <currency>CAD</currency>
  <price>859.3300</price>
  <discount>16.7200</discount>
  <totalQty>0</totalQty>
  <totalOnOrder>0</totalOnOrder>
  <totalBO>0</totalBO>

  <msrp>39.0000</msrp>

  <stock code="DCH ">
    <available>0</available>
    <onOrder>0</onOrder>
    <bo>0</bo>
  </stock>
  <stock code="DTN ">
    <available>0</available>
    <onOrder>0</onOrder>
    <bo>0</bo>
  </stock>
  <stock code="DHA ">
    <available>0</available>
    <onOrder>0</onOrder>
    <bo>0</bo>
  </stock>
  <stock code="DGU ">
    <available>0</available>
    <onOrder>0</onOrder>
    <bo>0</bo>
  </stock>
  <stock code="DCG ">
    <available>0</available>
    <onOrder>0</onOrder>
    <bo>0</bo>
  </stock>
</priceAvail>
<priceAvail>
  <synnexSku>4416851</synnexSku>
  <mfgPartNo>7479A6U</mfgPartNo>
  <status>ACTIVE</status>
  <description>TC M58P 3.0GHZ 2GB 160GB VBB32 7479A6U</description>
  <currency>CAD</currency>
```

TD SYNnex WebServices – Price/Availability V05

```
<price>1008.1000</price>
<discount>2.4200</discount>
<totalQty>0</totalQty>
<totalOnOrder>0</totalOnOrder>
<totalBO>0</totalBO>

<msrp>39.0000</msrp>

<stock code="DCH ">
  <available>0</available>
  <onOrder>0</onOrder>
  <bo>0</bo>
</stock>
<stock code="DTN ">
  <available>0</available>
  <onOrder>0</onOrder>
  <bo>0</bo>
</stock>
</priceAvail>
<priceAvail>
  <synnexSku>4416707</synnexSku>
  <mfgPartNo>7484AEU</mfgPartNo>
  <status>ACTIVE</status>
  <description>TC M58P 3.0GHZ 2GB 160GB VBB32 7484AEU</description>
  <currency>CAD</currency>
  <price>1005.5400</price>
  <discount>2.4100</discount>
  <totalQty>0</totalQty>
  <totalOnOrder>0</totalOnOrder>
  <totalBO>0</totalBO>

  <msrp>39.0000</msrp>

  <stock code="DCH ">
    <available>0</available>
    <onOrder>0</onOrder>
    <bo>0</bo>
  </stock>
  <stock code="DTN ">
    <available>0</available>
    <onOrder>0</onOrder>
    <bo>0</bo>
  </stock>
</priceAvail>
<priceAvail>
  <synnexSku>4418661</synnexSku>
  <mfgPartNo>9486A1U</mfgPartNo>
```

TD SYNnex WebServices – Price/Availability V05

<status>ACTIVE</status>
<description>TC A62 2.8GHZ 2GB 160GB VBB32 9486A1U</description>
<currency>CAD</currency>
<price>649.8400</price>
<discount>1.5600</discount>
<totalQty>0</totalQty>
<totalOnOrder>0</totalOnOrder>
<totalBO>0</totalBO>

<msrp>39.0000</msrp>

<stock code="DCH ">
 <available>0</available>
 <onOrder>0</onOrder>
 <bo>0</bo>
</stock>

<stock code="DTN ">
 <available>0</available>
 <onOrder>0</onOrder>
 <bo>0</bo>
</stock>

</priceAvail>

<priceAvail>

<synnexSku>4418632</synnexSku>
<mfgPartNo>9486A4U</mfgPartNo>
<status>ACTIVE</status>
<description>TC A62 2.7GHZ 1GB 160GB VBB32 9486A4U</description>
<currency>CAD</currency>
<price>703.7100</price>
<discount>1.6900</discount>
<totalQty>0</totalQty>
<totalOnOrder>0</totalOnOrder>
<totalBO>0</totalBO>

<msrp>39.0000</msrp>

<stock code="DCH ">
 <available>0</available>
 <onOrder>0</onOrder>
 <bo>0</bo>
</stock>

<stock code="DTN ">
 <available>0</available>
 <onOrder>0</onOrder>
 <bo>0</bo>
</stock>

</priceAvail>

TD SYNEX WebServices – Price/Availability V05

```

</return>
</ns2:getPriceAvailabilityResponse>
</soap:Body>
</soap:Envelope>
    
```

Data Dictionary

TD SYNEX Webservices

[Canada Production: https://ws.synnex.ca/webservice/pnaserviceV05?wsdl](https://ws.synnex.ca/webservice/pnaserviceV05?wsdl)
[Canada Sandbox: https://testws.synnex.ca/webservice/pnaserviceV05?wsdl](https://testws.synnex.ca/webservice/pnaserviceV05?wsdl)
[US Production: https://ws.synnex.com/webservice/pnaserviceV05?wsdl](https://ws.synnex.com/webservice/pnaserviceV05?wsdl)
[US Sandbox: https://testws.synnex.com/webservice/pnaserviceV05?wsdl](https://testws.synnex.com/webservice/pnaserviceV05?wsdl)

Segment	Type	Required	Repeat	Data Example	Data Description
<skuList>			Yes		
<synnexSku>		Optional		4647679	TD SYNEX Sku
<specialPriceType>		Optional			Normal, Acad, Gov
<mfgPartNumber>		Optional		INT318-015-002	MFG Part#
<warehouse>			Yes	DGU or All(Detail) or ANY (Total INV)	TD SYNEX Warehouse
<hideZeroInv>		Optional		Y/N	Show Inventory or not

Segment	Data Type			Data Example	Data Description
<synnexSku>				4647679	TD SYNEX Sku
<mfgPartNumber>				INT318-015-002	MFG Part#
<mfgCode>				13226	Vendor #
<status>				ACTIVE	Active status
<shortDescription>				INT BATTERY PACK CK60/PB42 ROHS F/CK6	short description
<globalProductStatusCode>				ACTIVE	
<resellerPrice>				109.22	Reseller Price
<totalQuantity>				0	Total Qty onhand
<totalOnOrder>				50	Total QTY on Order
<totalBO>				10	Total Backorder Qty
<availabilityByWarehouseList>					MSRP
<availabilityByWarehouseList>				39.0000	Breakdown by Warehouse
<warehouse>				DGU	Warehouse ID
<zipCode>				N1H 1B4	Warehouse Zip code
<city>				Guelph, ON	Warehouse City
<address>				107 Woodlawn Road West, Dock # 4	Warehouse Address
<quantity>				10	Warehouse Qty On hand
<OnOrder>				2	Warehouse Qty on Order
<BO>				0	Warehouse Qty on Backorder

TD SYNEX WebServices – Price/Availability V05

Warehouse Listings

TD SYNEX Warehouses

[Canada](#)

WH code	Zip	City	Address
DHA	B3S 1B3	Halifax, NS	115 Chain Lake Drive, Unit # 4
DGU	N1H 1B4	Guelph, ON	107 Woodlawn Road West, Dock # 4
DCG	T2C 4G6	Calgary, AB	5280 72 AVE SE
DTN	38654	Olive Branch, MS	10381 Stateline Rd
DCH	60139	Glendale Hts, IL	1850 Internationale Blvd
DDS	0	MFG Drop Shipped	MFG Drop Shipped
DRN	V6W 1G3	Richmond, BC	7415 Nelson Road, Unit 115

[United States](#)

WH code	Zip	City	Address
DFL	33182	Miami, FL	12650 NW 25th Street, Suite# 108
DFR	94538	Fremont, CA	44211 Nobel Drive, Dock #12-15
DAT	30071	Norcross, GA	200 Best Friend Court, Suite# 250
DDS	0	MFG Drop Shipped	MFG Drop Shipped
DFW	76177	Fort Worth, TX	5106 Liberty Way
DCH	60446	Romeoville, IL	1180 Remington Blvd
DTN	38654	Olive Branch, MS	10381 Stateline Rd
DNJ	8831	Monroe, NJ	201 Middlesex Center Blvd, Docks #34 to 51
DOR	97008	Beaverton, OR	6505 SW 110th Court
DCC	91761	Ontario, CA	3655 E Philadelphia St Ste B
DOH	43123	Grove City, OH	4001 Gantz Rd. Suite C, Docks# 9 to 18