

# TD Synnex WebServices – PO Status V02

---

## Table of Contents

- TD SYNEX WebServices Features/Benefits ..... 2
- PO Status Service ..... 2
- Getting Started..... 2
- Checking Connection via UI ..... 3
- Security Envelope..... 3
- Request Examples ..... 4
  - Sample #1: Successful Request – Standard Order ..... 4
    - Request ..... 4
    - Response ..... 4
- Data Dictionary ..... 6
- Warehouse Listings ..... 8

# TD Synnex WebServices – PO Status V02

---

## TD SYNEX WebServices Features/Benefits

1. Security - Authenticate, authorize, confidential, no-repudiation.
2. Monitor/Tracking - Detailed logs/ Transaction replay.
3. Testing - Auto testing for all logic layers (DAO, service, function testing, integration testing).
4. Support continuous integration (CI).
5. Easy maintainability – Mule server/ Spring framework/Easy integration
6. Logging- Continuous business improvement and performance improvement
7. Support to integrate BPM (Business process Management) into the process.
8. New platform, Current framework for today's business integrations

## PO Status Service

This service is geared toward providing Resellers with Real time PO Status updates

The reply provided by the service, will show each Order line broken out individually as one PO # might result in creation of Multiple sales order #s.

PO# will always be single Master link to all PO Order #s created.

## Getting Started

It's recommended you use a SOAPUI to assist getting up to speed.

By using a submitter, you can open visibility immediately to whether your sample code works or not. Your vision is not clouded by whether other service layers within your code are at fault.

When you load up the SoapUI, you can then create a project and add all the WSDL's

TD SYNEX has two websites for Webservices.

1. US Sandbox environment (<https://testws.us.tdsynnex.com/webservice> )
2. Canada Sandbox environment (<https://testws.ca.tdsynnex.com/webservice> )
  - a. This site is used for testing.
  - b. It's a closed environment, nothing ships or bills
  - c. Your regular ECX login/pw's work
  - d. Shipping and invoicing must be done manually so you might need assistance getting downstream transactions to work
3. US Production environment <https://ws.us.tdsynnex.com/webservice>
4. Canada Production environment <https://ws.ca.tdsynnex.com/webservice>
  - a. This is the production site
  - b. Use these WSDL's when ready for Production deployment
  - c. Use your regular ECX Login/pw's
  - d. Shipping/Invoicing done per normal Pick/Pack/Ship/invoice

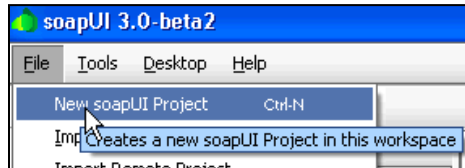
NOTE: Always check back periodically for newer versions of any WSDLs you may be using. Updates are made frequently to improve and add functionality.

Generally a convention of "V02", or "V03" can be found when the WSDL has been upgraded.

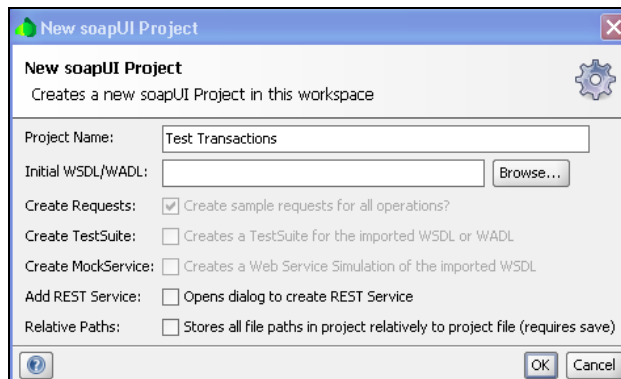
## Checking Connection via UI

Basic connection testing and transaction familiarization can be performed by using a SOAPUI. To download a SOAPUI go here: <https://sourceforge.net/projects/soapui/files/>. Find SOAPUI v3.0-beta 2 and download file “[soapui-3.0-beta-2-windows-bin.zip](#)” Once you download and install, you might need to adjust your java settings.

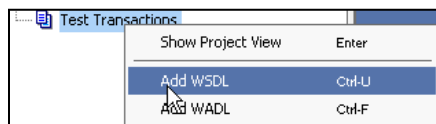
After installing SOAPUI you first must create a new Project (shown below)



Creation of a new project will envelope all individual transaction WSDL's



To add a WSDL to a Project, select “Add WSDL” and copy the WSDL URL from our WebServices Website



## Security Envelope

Each Requires a security envelope be added.

Looks like this:

```
<soapenv:Header>
  <wsse:Security xmlns:wsse="https://docs.oasis-open.org/wss/2004/01/oasis-200401-wss-
wssecurity-secext-1.0.xsd" soapenv:mustUnderstand="1">
    <wsse:UsernameToken xmlns:wsu="https://docs.oasis-open.org/wss/2004/01/oasis-200401-
wss-wssecurity-utility-1.0.xsd" wsu:Id="UsernameToken-22676229">
      <wsse:Username>TEST@SYNNEX.COM;123456</wsse:Username>
      <wsse:Password Type="https://docs.oasis-open.org/wss/2004/01/oasis-200401-wss-username-
token-profile-1.0#PasswordText">PWHERE</wsse:Password>
    </wsse:UsernameToken>
  </wsse:Security>
```

# TD Synnex WebServices – PO Status V02

---

</soapenv:Header>

Note:

- Insert EC Login name and account# in <wsse:Username> tag (**HIGHLIGHTED**)
- Insert EC PW in <wsse:Password> tag (**HIGHLIGHTED**)
- Insert in each WSDL request.

## Request Examples

### Sample #1: Successful Request – Standard Order

Note: If you use the same PO Number multiple times, you will receive multiple returns.

End point: <https://ws.us.tdsynnex.com/webservice/posserviceV02>

Schema: <https://ws.synnex.com/webservice/posserviceV02?wsdl>

#### Request

```
<soapenv:Envelope xmlns:soapenv="https://schemas.xmlsoap.org/soap/envelope/"
xmlns:pnav="https://posV02.model.ws.synnex.com/">
<soapenv:Header>
→Insert security token ←
</soapenv:Header>
<soapenv:Body>
  <pos:getPOStatus>
    <!--Optional:-->
    <arg0>
      <!--Optional:-->
      <customerNumber>xxxxx</customerNumber>
      <poNo>D-O6A6PA100063</poNo>
    </arg0>
  </pos:getPOStatus>
</soapenv:Body>
</soapenv:Envelope>
```

#### Response

```
<soap:Envelope xmlns:soap="https://schemas.xmlsoap.org/soap/envelope/">
<soap:Body>
  <ns2:getPOStatusResponse xmlns:ns2="https://posV02.model.ws.synnex.com/">
    <return>
      <poNo>D-O6A6PA100063</poNo>
      <responseDateTime>Wed Nov 20 09:22:11 PST 2013</responseDateTime>
      <submitDateTime>2013-11-13T12:08:09</submitDateTime>
      <status>ACCEPTED</status>
      <responseElapsedTime>6.786</responseElapsedTime>
      <shipToLocation>
```

## TD Synnex WebServices – PO Status V02

---

```
<locationName>SYNNEX DEMO ACCT</locationName>
<address1>39 PELHAMRIDGE RD.</address1>
<address2>XXX DO NOT SHIP XX</address2>
<city>GREER</city>
<state>SC</state>
<zipCode>29651</zipCode>
<country>US</country>
</shipToLocation>
<shipToContact>
  <name>123456</name>
  <phone>45654</phone>
</shipToContact>
<eta>2013-11-21T00:00:00-08:00</eta>
<itemsV2>
  <item lineNumber="1">
    <status>ACCEPTED</status>
    <orderNumber>60045675</orderNumber>
    <orderType>SO</orderType>
    <orderQuantity>50</orderQuantity>
    <unitPrice>395.0</unitPrice>
    <synnexSku>3364043</synnexSku>
    <mfgPartNumber>WVSF346</mfgPartNumber>
    <productShortDescription>HD (1280X960) VANDAL-RESISTANT FIXED
DOM</productShortDescription>
    <shipQuantity>0</shipQuantity>
    <shipFromWarehouse>DCC</shipFromWarehouse>
    <shipMethod>NL</shipMethod>
    <shipMethodDescription>Hold Order</shipMethodDescription>
  </item>
  <item lineNumber="1">
    <status>ACCEPTED</status>
    <orderNumber>60045676</orderNumber>
    <orderType>SO</orderType>
    <orderQuantity>50</orderQuantity>
    <unitPrice>395.0</unitPrice>
    <synnexSku>3364043</synnexSku>
    <mfgPartNumber>WVSF346</mfgPartNumber>
    <productShortDescription>HD (1280X960) VANDAL-RESISTANT FIXED
DOM</productShortDescription>
    <shipQuantity>0</shipQuantity>
    <shipFromWarehouse>DTN</shipFromWarehouse>
    <shipMethod>NL</shipMethod>
    <shipMethodDescription>Hold Order</shipMethodDescription>
  </item>
</itemsV2>
</return>
</ns2:getPOStatusResponse>
```

# TD Synnex WebServices – PO Status V02

```
</soap:Body>
</soap:Envelope>
```

## Data Dictionary

TD SYNEX Webservises		
<b>PO Confirmation V02</b>		
WSDL Tag	Data Example	Data Description
<poNo>	1296	Customer PO #
<responseDateTime>	Tue Nov 12 12:31:24 PST 2013	Response datetime
<status>	INVOICED	PO Status
<responseElapsedTime>	6.72	Response elapse time
<b>&lt;shipToLocation&gt;</b>		
<locationName>	IDAHO NATIONAL GUARD	Ship location name
<address1>	3882 WEST ELLSWORTH ST	Location address
<address2>	BLDG 440	location address 2
<city>	BOISE	City
<state>	ID	State
<zipCode>	83705	Zip
<country>	US	Country
<b>&lt;shipToContact&gt;</b>		
<name>	J MARTINEZ	Contact Name
<phone>	444 272 3555	Contact Phone
<eta>	2013-11-06T16:10:18.236- 08:00	PO ETA (oldest ETA)
<b>&lt;itemsV2&gt;</b>		
<item lineNumber="1">		PO Line #
<status>	INVOICED	Line Order status
<orderNumber>	59554356	Line Order #
<orderType>	SO	Order type
<orderQuantity>	6	Order QTY
<unitPrice>	664.44	Reseller Price
<synnexSku>	3687024	TD SYNEX SKU
<mfgPartNumber>	AKA-1043-001	MFG Part #
<productShortDescription>	TD SYNEX 1U ATOM SERVER-4	Product Description
<shipQuantity>	6	Shipped QTY
<shipFromWarehouse>	DFR	Ship from Warehouse
<shipMethod>	FX	Ship method
<shipMethodDescription>	FedEx Express Saver	Ship method description
<shipDatetime>	2013-10-21T17:35:06	Ship Date

## TD Synnex WebServices – PO Status V02

---

<packages>		
<package>		
<trackingNumber>	508922220890	Tracking #
<weight>	13.85	Item scanned weight
<shipltemQuantity>	1	Ship QTY
<serialNo>	AK022023	Product Serial #

# TD Synnex WebServices – PO Status V02

## Warehouse Listings

### TD SYNnex Warehouses

#### Canada

WH code	Zip	City	Address
DRN	V6W 1G3	Richmond, BC	7415 Nelson Road, Unit 115
DHA	B3S 1B3	Halifax, NS	115 Chain Lake Drive, Unit # 4
DGU	N1H 1B4	Guelph, ON	107 Woodlawn Road West, Dock # 4
DCG	T2C 4G6	Calgary, AB	5280 72 AVE SE
DTN	38654	Olive Branch, MS	10381 Stateline Rd
DCH	60139	Glendale Hts, IL	1850 Internationale Blvd
DDS	0	MFG Drop Shipped	MFG Drop Shipped

#### United States

WH code	Zip	City	Address
DFL	33182	Miami, FL	12650 NW 25th Street, Suite# 108
DFR	94538	Fremont, CA	44211 Nobel Drive, Dock #12-15
DAT	30071	Norcross, GA	200 Best Friend Court, Suite# 250
DDS	0	MFG Drop Shipped	MFG Drop Shipped
DTX	76177	Fort Worth, TX	5100 Liberty Avenue
DCH	60446	Romeoville, IL	1180 Remington Blvd
DTN	38654	Olive Branch, MS	10381 Stateline Rd
DNJ	8831	Monroe, NJ	201 Middlesex Center Blvd, Docks #34 to 51
DOR	97008	Beaverton, OR	6505 SW 110th Court
DCC	91761	Ontario, CA	3655 E Philadelphia St Ste B
DOH	43123	Grove City, OH	4001 Gantz Rd. Suite C, Docks# 9 to 18