

How do you manage your network infrastructure when you are not at the physical location? The Opengear Network Resilience platform combines Out-of-Band Management with network automation tools, to provide secure remote access to your critical devices.

Smart Out-of-Band isn't just for emergency access. The Opengear platform creates an independent management plane, for Day One provisioning and everyday use, as well as reliable cellular access when the production network is down.

Smart Out-of-Band Management

Reduced Downtime

- Advanced monitoring to detect issues before they become failures
- Minimize downtime with intelligent logging to fix problems
- Active monitoring of not just your network but also the physical environment

Built for network automation

- Run Docker containers and Python scripts on the console server
- Simplify management of your OOB network
- Scalable solutions for data center and at the edge
- Advanced centralized management through a single pane of glass

Always-on Access

- Out-of-band access via multiple pathways
- Connectivity via ethernet/SFP, PSTN, cellular
- Failover to Cellular™ combined with IP Passthrough to provide network connectivity for edge installations

Products



OM1200 & OM2200 Console Servers

- Network Automation & Out-of-Band in a single appliance
- x86 CPU and Secure Boot (TPM chip)
- Run Docker containers and Python scripts
- 4-48 console ports
- Separate platforms optimized for 1GbE and 10 GbE networks



Resilience Gateway ACM7000-L

- Embedded cellular with IP Passthrough
- for network failover
- 4-8 console ports
- Environmental monitoring
- Compact form factor
- Combo switch model available



Console Manager CM8100

- 16, 32, 48 or 96 port serial console server
- Replacement for legacy terminal servers
- Embedded security using TPM 2.0 module
- Dual power supplies with independent monitoring
- Integrated environmental temperature monitoring
- Four network interfaces, 2x 10GbE SFP+ uplinks and 2x 1GbE ports (CM8100 10G)

Features

Smart OOB™

- Enable better visibility during failures.
- Proactively detect faults before failures become a reality.
- Advanced logging enables quick identification of issues.
- Alerting via SNMP, email, cellular SMS, RESTful API or Lighthouse.

Failover to Cellular™

- Reliable connectivity during primary network failures.
- Lower connection cost compared to copper phone lines.
- IP based technology enables NetOps to directly communicate via SSH clients instead of finding a port to dial into the device.

Built-in TFTP Server

- Industry leading internal storage capacity.
- Enables the user to store and utilize existing configurations and firmware during accidental configurations, resets or equipment failures.

Automated Deployment Process

- Combine ZTP, LLDP and CDP to quickly deploy across the entire network with minimal effort.
- Flexible configuration file types and deployment methods enable Day One operations.
- Reduce deployment cost and manned operations.
- Minimize human errors, guarantee repeatability.

Environmental Monitoring

- Combine environmental monitoring with our *Smart OOB* to provide greater insight beyond the network equipment.
- Monitoring external factors enables the user to minimize damage to equipment.

Opengear Family Of Products



ACM7000-L Resilience Gateway



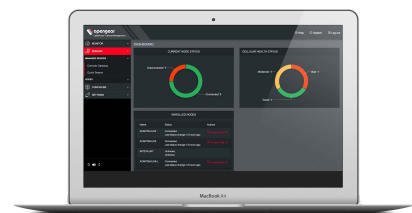
ACM7000 Resilience Gateway



OM1200 Console Server



OM2200 Console Server



Lighthouse Management Software



CM8100 Console Server

Centralized Management - Lighthouse

- Lighthouse centralizes your network and IT infrastructure into a single application and provides an unparalleled level of resilient access and visibility even during critical failures.
- Lighthouse is your central network hub and management portal for Opengear *Smart OOB* devices.
- Scalable administration and automation through its entire lifecycle – from Day One provisioning, to routine operations and disaster recovery.

Network Automation (OM Appliances)

- x86 CPU supports standard Docker containers and Python runtime environment
- Up to 64GB SSD allows local storage of configuration and software files
- Embedded TPM 2.0 chip for secure boot process
- Automate standard routines with your own or 3rd party modules

Strong Security and Authentication

- Built-in configurable stateful Firewall on all devices.
- FIPS-1140-2 compliance with OpenSSL. Strong Ciphers-AES Encryption. Cisco Compatible IP Sec, OpenVPN, AAA – TACACS+, RADIUS, Active Directory/OpenLDAP, Kerberos, with local fallback, Two-Factor authentication with AAA.
- Active firmware updates to quickly patch security issues.

Scalable Out-Of-Band Solution

- Wide range of hardware with various console port options, USB and flexible connection options such as redundant ethernet/SFP fiber, PSTN modem and cellular.