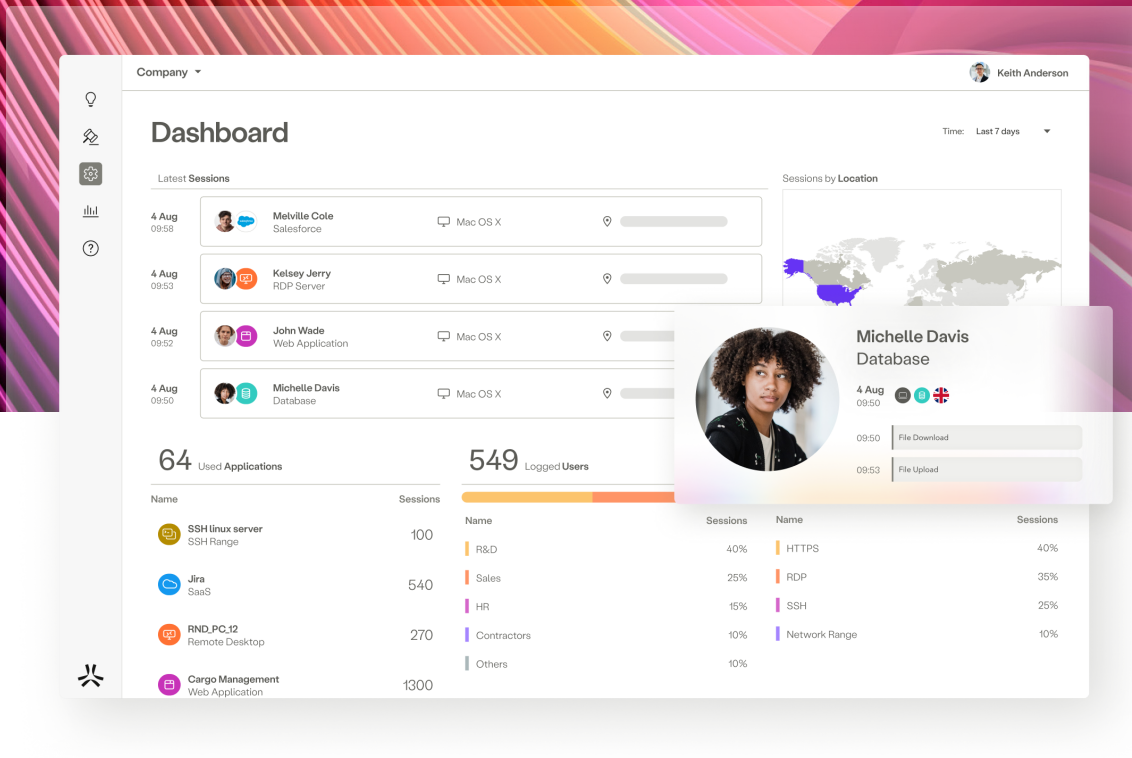




At a glance

HPE Aruba Networking SSE

Enable seamless and secure access for every user, device, and application, from anywhere with HPE Aruba Networking SSE.



When connectivity is in sync with the workplace you can:

Enable the distributed enterprise

77% of companies will allow hybrid work. Empower employees to work from anywhere by seamlessly connecting employees to apps from any location, device, or network.

Secure third-party access

1/3 users are partners, suppliers, vendors or customers. Enable the business ecosystem to securely access sensitive data—without extending network access or installing an agent.

Modernize infrastructure

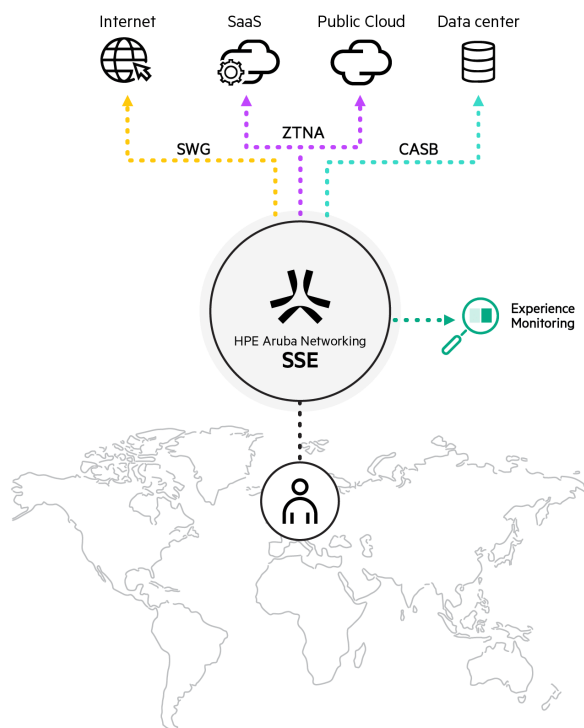
Transform the network to a modern cloud architecture. Replace legacy appliances, simplify hybrid-cloud adoption, reduce infrastructure costs and introduce automation.



To outpace competition IT has been asked to invest in services designed to ensure the productivity of the workforce, and its supply chain. This has created an opportunity for IT to define the new technologies that will connect their users to key business resources like M365, Salesforce and SAP. Ninety percent of IT leaders have plans to adopt SaaS and hybrid cloud services that extend connectivity out to their workforce. In this modern workplace every user, application, and their device are connected to the Internet.

Unlike the traditional network, the Internet cannot be controlled by IT. Because of this, the network solutions that worked for the past 30 years are not only obsolete, but they place users on the network and expose infrastructure to the Internet. A new approach is needed in order to securely, and seamlessly, control access over the Internet.

HPE Aruba Networking aims to accelerate the transition to the modern workplace, through security connectivity with its Security Service Edge (SSE) platform. HPE Aruba Networking SSE is a Security Service Edge (SSE) platform that uses 500+ edge locations to elegantly connect users, and servers, to the business resources needed for work. The platform artfully integrates ZTNA, SWG, CASB and DEM into one, cloud-delivered, platform that feels weightless, and is controlled by a single pane of glass.



Super Simple

SSE minimizes complexity.

Direct the orchestra of users and apps from one pane of glass. It's cloud design lightens the management burden for IT, and is equipped with an elegant policy-tagging system for simplicity.

Super Smart

SSE proves being smarter, cooler.

Auto-sync with the environment with a cybersecurity mesh of IDP and endpoint services to auto-tune policies, and fluently adapt access rights. SSE proves being smarter, is cooler. Even react faster to user experience issues.

Super Secure

SSE makes security omnipresent.

Inspect traffic to elevate visibility and prevent ransomware. Protect against data leakage. Detect and respond faster to protect against threats.



HPE Aruba Networking SSE Capabilities

Zero trust network access (ZTNA)

HPE Aruba Networking ZTNA is the most advanced ZTNA service in the industry. It uses identity, policy and context to broker secure, one-to-one, connections to private apps (even VOIP, AS400, and ICMP). It fully replaces VPN, and avoids the need for network access or exposure.

Secure web gateway (SWG)

HPE Aruba Networking SWG uses advanced SSL inspection, URL filtering, and DNS filtering, to ensure that authorized users get fast, secure access to the Internet—while protecting the business from Internet- based threats that aim to harm it.

Cloud access security broker (CASB)

HPE Aruba Networking CASB mediates the connections between users and cloud applications, and helps discover Shadow IT to apps. CASB ensures sensitive business data in motion remains protected, while helping prevent cyberthreats.

Digital experience monitoring (DEM)

HPE Aruba Networking Experience ensures user productivity by measuring hop-by-hop metrics, and monitoring app, device and network performance. IT can easily pinpoint connectivity issues, and reduce mean time to innocence.

Single pane of glass

With the unified SSE dashboard, IT can manage access to all private apps, Internet, SaaS apps, and digital experience monitoring from one console. Easily define policies, track user activity, manage tenants, and oversee a cybersecurity mesh of SSE, IDP, and endpoint security.

Inspection of all traffic

View user activity, files downloaded, commands used and block malicious actions by inspecting all private and public traffic with HPE Aruba Networking ZTNA and SWG.

Application discovery

Shine light on unsanctioned applications, and domains, easily define policies for each, and reduce the organization's overall attack surface.

Automated alerts and data classification

HPE Aruba Networking SSE uses AI to generate alerts, automatically detect potential security events, and improves the classification of data.

Agent and agent-less

The SSE agent forwards traffic to the HPE Aruba Networking SSE platform, performs device posture assessment, and integrates with existing endpoint solutions. The agent supports iOS, Android, Mac and Windows. HPE Aruba Networking SSE also has robust agentless capabilities, allowing secure access to web-based apps—even browser-based RDP, SSH, Git, and database.

Server-to-server access

HPE Aruba Networking SSE ensures servers safely communicate with other servers, applying zero trust to non-user entities.

Data leakage prevention

Protect sensitive data from leaking out to the Internet by sitting inline and enforcing policies that block file downloads, copy and paste, and help meet compliance standards. Support agentless and agent-based deployments.

Detection and response

Prevent malware-based attacks before they even begin with advanced malware scanning and detection. Increased insights allow teams to respond to security events faster than ever.

Learn more at arubanetworks.com/products/sse/

**Make the right purchase decision.
Contact our presales specialists.**



Contact us

© Copyright 2023 Hewlett Packard Enterprise Development LP. The information contained herein is subject to change without notice. The only warranties for Hewlett Packard Enterprise products and services are set forth in the express warranty statements accompanying such products and services. Nothing herein should be construed as constituting an additional warranty. Hewlett Packard Enterprise shall not be liable for technical or editorial errors or omissions contained herein.

All third-party marks are property of their respective owners.

a00133860enw SK 080723