

Selecting the right Chromebook for your school, staff and students



This document walks you through four steps to help you choose the right Chromebook:

1

Identify the primary use case, or how the device will be used.

2

Map out the device specifications required for these use cases.

3

Make recommendations for devices that meet these needs.

4

Compare across the device ecosystem and find the right device.

Last Updated: January 2023

Next Update: June 2023

NOTE: Placement of devices within use case categories will be evaluated & updated bi-annually. Some configurations may only be available in select markets. Please contact your Channel or OEM representative regarding the availability of specific devices and configurations.

Finding the right Chromebook | Device Categories



Learning Anywhere

Classroom and distance learning devices

Supports multiple browser tabs, Google Workspace, **concurrently** with video conferencing with 49+ participants

Recommended software/apps

[Google Workspace for Education](#)
Google [Meet/Classroom](#)
[Zoom](#)

Minimum system requirements

RAM: 4GB

CPU:

- **Intel:** 4500 /5000 /5100/6000/ N100 / N200 / U300
- **AMD:** 3015Ce / Athlon Silver / Athlon Gold
- **MediaTek Kompanio:** 500, 820, 828, 520, 528, 1200
- **QC:** 7c+ Gen 1,2,3



Advanced Use

Teachers, staff, higher education, high school devices

Recommended for heavy workloads including content creation/editing, coding, running apps in virtualized environments. Supports heavy multitasking (large video calls with 49+ participants, multiple browser tabs, Google Workspace, external monitors/displays)

Recommended software/apps

VC/Comms: Google [Meet/Classroom](#), [Zoom](#), Cisco Webex, RingCentral, Slack and [more](#)
VDI: Itopia, Citrix, VMware, Parallels
Coding: Linux
Print: Papercut, Canon, HP Print, PrinterLogic, Ricoh
Productivity: [Google Workspace for Education](#)

Minimum system requirements

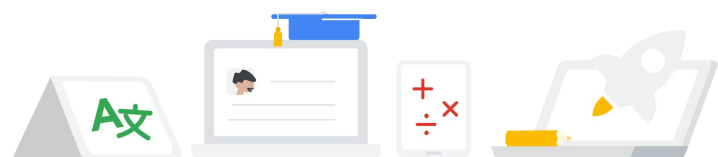
RAM: 8GB

CPU:

- **Intel:** Fan - i3 N305, i3, i5, i7, Fanless - i5*, i7
- **AMD:** Ryzen 3, 5, 7
- **MediaTek Kompanio:** 1380

*Fanless i3 devices can support select use cases such as VDI

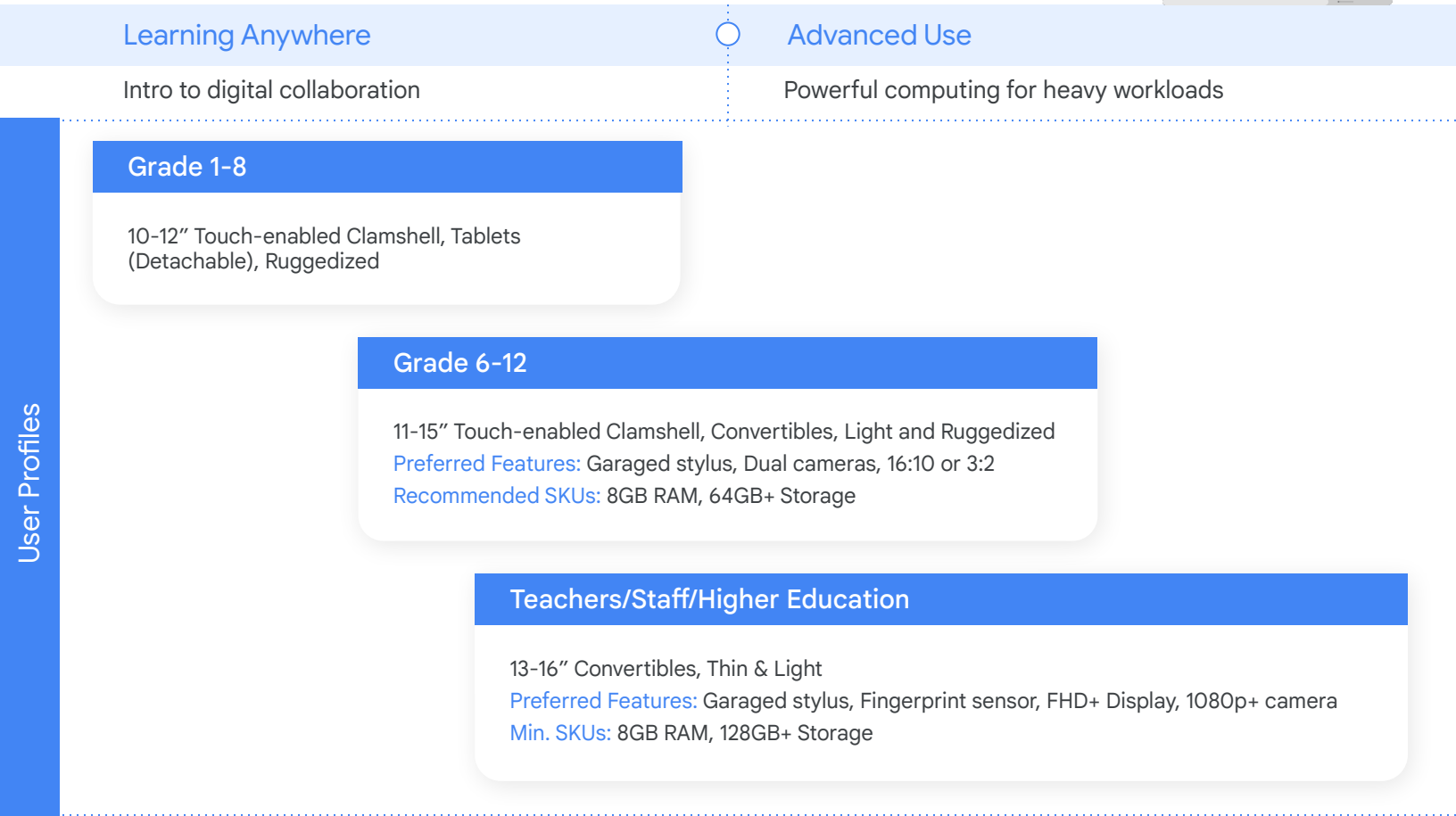
Devices marked for Advanced Use will be able to handle all the listed workloads in the Learning Anywhere segment. However, Learning Anywhere devices may not be able to optimally support Advanced Use workloads.



Finding the right Chromebook | User Profile & Features

The below table maps the education wayfinding segments to user profiles. Also listed are the form factors and features that would provide an ideal experience for each user profile. These are not requirements but recommendations.

In the following pages you can find a list of devices organized by manufacturer. This info can help you find the right device with the specs required to suit the users' needs.



Learning Anywhere

Intro to digital collaboration

Advanced Use

Powerful computing for heavy workloads

Grade 1-8

10-12" Touch-enabled Clamshell, Tablets (Detachable), Ruggedized

Grade 6-12

11-15" Touch-enabled Clamshell, Convertibles, Light and Ruggedized
Preferred Features: Garaged stylus, Dual cameras, 16:10 or 3:2
Recommended SKUs: 8GB RAM, 64GB+ Storage

Teachers/Staff/Higher Education

13-16" Convertibles, Thin & Light
Preferred Features: Garaged stylus, Fingerprint sensor, FHD+ Display, 1080p+ camera
Min. SKUs: 8GB RAM, 128GB+ Storage



AUE: Auto update expiration

You can find information about Auto update expiration for your devices [here](#).



Connected devices

Devices with WiFi 6/LTE/5G SKUs have been color coded on the following pages.



Zero-touch enrollment

For the most updated list of devices enabled for zero-touch enrollment, reference [here](#).



Supported peripherals

[Works With Chromebook](#) is peripherals certification program ensuring compatibility across all makes of Chromebook devices. Categories include headsets, webcams, mics, external storage and more.




Virtualization

ChromeOS partners with desktop and app virtualization solutions that expand what you can do on Chromebooks. Check out their sites to learn more: [Itopia](#), [Parallels](#), [Cameyo](#).

Finding the right Chromebook | Device Highlights

Learning Anywhere

Purpose-built education devices for introductory digital creation



Acer Chromebook Spin 512

- Garaged Stylus
- Convertible
- LTE
- 12"




ASUS Chromebook CR11 Flip (CR1102F)

- Stylus Compatible
- Convertible
- WIFI 6
- 11.6"




Dell Chromebook 3110 2-in-1

- Convertible
- LTE/eSIM
- 11.6" HD




HP Fortis 14" G10 Chromebook

- LTE/eSIM
- 14" up to FHD



Lenovo 500e Gen4

- Stylus Compatible
- Convertible
- LTE
- 12.2"




Samsung Galaxy Chromebook 2 360

- Stylus Compatible
- Convertible
- LTE
- 12.4"


Advanced Use

Powerful, high performance devices recommended for teachers, staff and advanced students




Acer Chromebook Enterprise 714

- Garaged Stylus
- Convertible
- Fingerprint Sensor
- 14" FHD




Asus Chromebook Flip CX5 (CX5601)

- Stylus Compatible
- Convertible
- WIFI 6E
- 16" FHD




Dell Latitude 5430 Chromebook

- Stylus Compatible
- Convertible
- LTE
- 12.4"




HP Elite Dragonfly 13.5" Chromebook

- Magnetic Stylus
- Convertible
- 5G/LTE
- 13.5" up to QHD



Lenovo Flex 5i Chromebook

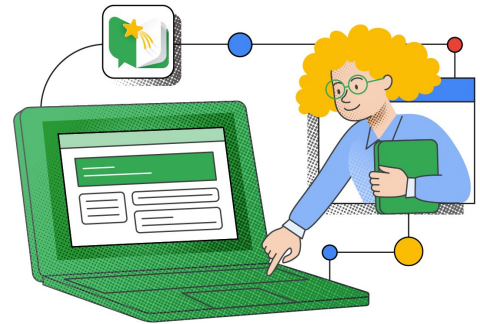
- Stylus Compatible
- Convertible
- Fingerprint Sensor
- 14" FHD



Samsung Galaxy Chromebook 2

- Stylus Compatible
- Convertible
- 13.3" QLED

Expand educational possibilities with the Screencast app and cast moderator



Screencast

Easily record, share, and view transcribed videos with the **Screencast app** built into ChromeOS*, and create a library of recorded lessons students can watch from home.

- Record and narrate lessons, even enhance them while recording by trimming text or adding handwritten notes with a touchscreen or [stylus](#)
- Automatically save recorded lessons to Google Drive – even create a link for anyone in your school's domain for easy and secure shareability
- Flip the traditional classroom model by recording a lesson ahead of time and assigning it to students as homework
- Provide a more inclusive learning experience with automatic translation of recorded transcripts into other languages

Cast Moderator

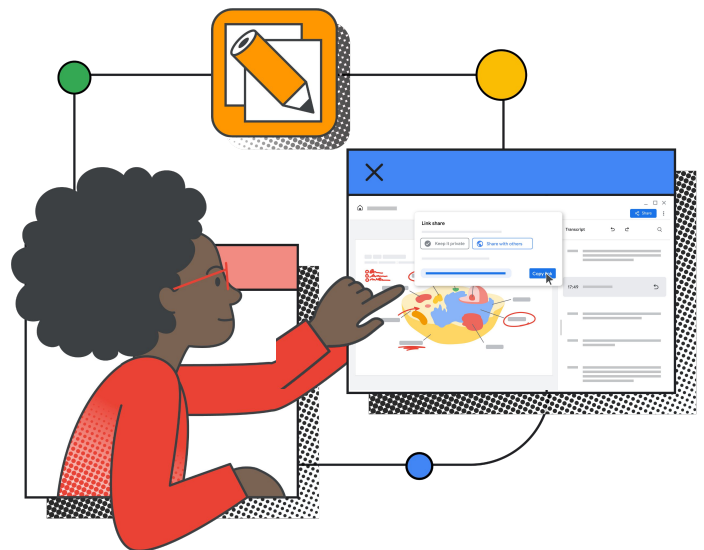
Inspire students to share their ideas on the big screen – while always staying in control of who's casting in your classroom – with **cast moderator**.

- Keep class on track by controlling who's casting and quickly turn off a cast with the click of a remote - not to mention wirelessly for classroom flexibility.
- Enable classes to securely cast with a 6-digit access code that refreshes each time a cast begins and for educator's cast receiver saves the code automatically to limit the times they need to enter the casting code.
- Encourage students to share ideas by inviting them to cast to show how they solved an algebra problem or present a report right from their Chromebook

Better together

Screencast app and **cast moderator** work together seamlessly to let educators and students wirelessly share their screens right from their Chromebooks – with robust moderation features for educators. Control who's presenting to the big screen and turn off screencasting with the click of a button.

As you control the classroom casting experience, you can record, narrate, and transcribe your lessons, even draw or write on your screen as you record using a touchscreen or stylus to diagram or highlight key concepts.



*Available with ChromeOS M108 higher





Learning Anywhere

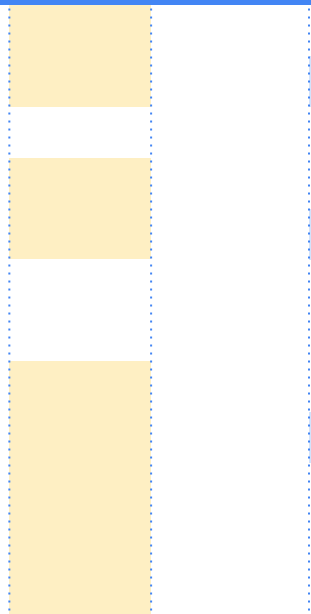
- CB 712 (C871/C871T) [CM5205/ PMD6405U, 4GB] Clamshell, 12" touchscreen (optional)
- CB 311 (C722/T) [Kompanio 500, 4GB] Clamshell, 11" touchscreen (optional)
- CB 314 (C934/C934T) [4500/5100/PQCN6000, 4/8GB] Clamshell, 14" touchscreen (optional)
- CB 314 (C922) [Kompanio 500, 4GB] Clamshell, 14" screen
- CB 511 (C741/L/LT) [SC7180/7c, 4/8GB] Clamshell, 11" touchscreen (optional)
- CB 512 (C852/C852T) [N4500/5100], 4/8GB] Clamshell, 12" touchscreen (optional)
- CB 511 (C734, C734T) [N4500/5100, 4/8GB] Clamshell, 11" touchscreen (optional)
- CB 511 (C736/T/L/LT/-TCO/T-TCO/L-TCO/LT-TCO) [N100/200, 4/8GB] Clamshell, 11" touchscreen (optional)
- CB Spin 511 (R753T/TN) [N4500/5100, 4/8GB] Convertible, 11" touchscreen
- CB Spin 511 (R756T/TN/T-TCO/TN-TCO) [N100/200, 4/8GB] Convertible, 11" touchscreen
- CB Spin 512 (R853TA/TNA) [N4500/5100/PQCN6000, 4/8GB] Convertible, 12" touchscreen
- CB Spin 512 (R856T/TN/T-TCO/TN-TCO) [N100/200, 4/8GB] Convertible, 12" touchscreen
- CB Spin 513 (R841T/LT) [SC7180, 4/8GB] Convertible, 13" touchscreen
- CB Spin 311 (R722T) [Kompanio 500, 4GB] Convertible, 11" touchscreen
- CB Spin 314 [N4500,5100,6000, 4/8GB] Convertible, 14" touchscreen
- CB Tab 510 [Qualcomm, 4GB] Tablet, 10" touchscreen
- CB Vero 712 (CV872/CV872T) [CM7305/PMD8505, 4/8GB] Clamshell, 12" touchscreen (optional)



G
G
G
G

Advanced Use

- CB 712 (C871/T) [i3, 8GB] Clamshell, 12" touchscreen (optional)
- CB Spin 713 (CP713-2W/-3W) [i3/i5/i7, 8/16GB] Convertible, 13" touchscreen
- CB Spin 514 (CP514-1W/-1WH) [R3/5/7, 8/16GB] Convertible, 14" touchscreen
- CB Spin 514 (CP514-3WH) [R3/R5/R7, 8/16GB] Convertible, 14" touchscreen
- CB Spin 714 (CP714-1WN) [i3/i5/i7, 8/16GB] Convertible, 14" touchscreen
- Chromebox CX14 [i3/i5/i7, 8/16GB] Mini PC
- Chromebox CX15 [i3/i5/i7, 8/16GB] Mini PC
- CB 514 (CB514-1W/-1WT) [i3/i5/i7, 8GB] Clamshell, 14" touchscreen (optional)
- Spin 514 (CP514-2H) [i3/i5/i7, 8GB/16GB] Convertible, 14" touchscreen
- CB 515 (CB515-1W/-1WT) [i3/ i5/ i7, 8GB/16GB Clamshell, 15" touchscreen (optional)
- CB Vero 514 (CBV514-1H/HT) [i3/i5/i7, 8/16GB] Clamshell, 14" touchscreen (optional)
- CB Vero 712 (CV872/CV872T) [i3, 8GB] Clamshell, 12" touchscreen (optional)



G
G
G

KEY
 Devices that have WiFi 6 enabled SKUs
 Stylus compatible | G = Garaged stylus included
 Devices that have an LTE/5G SKU

Learning Anywhere

| | | | |
|---|--|----------|---|
| CR1 (CR1100C) [N4500,N5100,N6000, 4/8GB] Clamshell, 11.6"screen | | Optional | |
| CR1 (CR1100F) [N4500,N5100,N6000, 4/8GB] Convertible, 11.6" touchscreen | | Optional | G |
| CR11 (CR1102) [N100/N200, 4/8/16GB] Clamshell, 11.6" screen | | | |
| CR11 (CR1102F) [N100/N200, 4/8/16GB] Convertible, 11.6" touchscreen | | | G |
| CZ1 (CZ1000) [Kompanio 500,4GB] Tablet, 10.1" touchscreen | | | G |
| CX1 (CX1101C) [N4020, 4GB] Clamshell, 11.6" screen | | | |
| CM1 (CM1400F) [3015CE, 4/8GB] Convertible, 14" touchscreen | | | |
| CX1 (CX1102F) [N4500,N5100, N6000, 4/8GB] Convertible, 11.6" touchscreen | | | |
| CX1 (CX1102C) [N4500,N5100, N6000, 4/8GB] Clamshell, 11.6" screen | | | |
| CX1 (CX1400C, CX1500C, CX1700C) [N4500, N5100, N6000, 4/8GB] Clamshell, 14"/15.6"/17.3" screens | | | |
| CX1 (CX1400F, CX1500F) [N4500, N5100, N6000, 4/8/16GB] Convertible, 14"/15.6" touchscreen | | | |
| CM3 (CM3000) [Kompanio 500,4GB] Tablet, 10.5" touchscreen | | | G |
| CM3 (CM3200) [Kompanio 820, 4GB] Convertible, 12" touchscreen | | | |
| CX3 (CX3400) [Fan i3, 4GB] Convertible, 14" touchscreen | | | G |
| CM5 (CM5500) [R3/5, 4GB] Convertible, 15.6" touchscreen | | | |
| CM14 (CM1402C) [Kompanio 520, 4/8GB] Clamshell, 14" screen | | | |
| CM14 (CM1402F) [Kompanio 520, 4/8GB] Convertible, 14" touchscreen | | | G |

Advanced Use

| | | | |
|---|--|--|---|
| CX3 (CX3400) [i3/i5/i7, 8/16GB] Convertible, 14" touchscreen | | | G |
| CX34 (CX3401F)[i3/i5/i7, 8/16GB] Convertible, 14" touchscreen | | | G |
| CX5 (CX5601, CX5500, CX5400) [i5/i7, 8/16GB] Convertible, 16"/15.6"/14" touchscreen | | | G |
| CX55 (CX5501F)[i3/i5/i7, 8/16GB] Convertible, 15.6" touchscreen | | | G |
| CX9 (CX9400) [i3/i5/i7, 8/16GB] Clamshell, 14" screen | | | |
| CM5 (CM5500) [R5, 8GB] Convertible, 15.6" touchscreen | | | |
| Chromebox 4 [i3/i5/i7, 8/16GB] Mini PC | | | |
| Chromebox 5 [i7, 16/32GB] Mini PC | | | |



KEY



Devices that have WiFi 6 enabled SKUs



Stylus compatible | G = Garaged stylus included



Devices that have an LTE/5G SKU



Learning Anywhere

Dell Chromebook 3110 [N4500, 4/8GB] Clamshell, 11.6

Dell Chromebook 3110 (2 in 1) [N4500, 4/8GB], Convertible, 11.6" touchscreen

Advanced Use

Latitude 5430 Chromebook [i3/i5/i7 8/16GB] Clamshell, 14" screen

Latitude 5430 2-in-1 Chromebook [i7, 8/16GB] Convertible, 14" touchscreen

| Device | WiFi 6 | LTE/5G | Stylus |
|--|--------|--------|--------|
| Dell Chromebook 3110 [N4500, 4/8GB] Clamshell, 11.6 | | G | |
| Dell Chromebook 3110 (2 in 1) [N4500, 4/8GB], Convertible, 11.6" touchscreen | | | |
| Latitude 5430 Chromebook [i3/i5/i7 8/16GB] Clamshell, 14" screen | | G | |
| Latitude 5430 2-in-1 Chromebook [i7, 8/16GB] Convertible, 14" touchscreen | | | |

KEY

- Devices that have WiFi 6 enabled SKUs
- Devices that have an LTE/5G SKU
- Stylus compatible | G = Garaged stylus included



Learning Anywhere

- HP Chromebook 11 G9 EE [N5100, 4/8GB], Clamshell, 11" touchscreen (optional)
- HP Chromebook 11MK G9 EE [Kompanio 500, 4/8GB], Clamshell, 11" touchscreen (optional)
- HP Chromebook 14 G7 [N5100, 4/8GB], Clamshell, 14" touchscreen (optional)
- HP Chromebook X360 11 MK G3 EE [Kompanio 500, 4/8GB], Convertible, 11.6" touchscreen
- HP Chromebook X360 11 G4 EE [N5100, 4/8GB], Convertible, 11.6" touchscreen
- HP Fortis X360 11 G3 J Chromebook [N4500/N5100/N6000, 4/8GB], Convertible, 11.6" touchscreen
- HP Fortis 14" G10 Chromebook [N4500/5100/6000, 4/8GB], Clamshell, 14" touchscreen (optional)
- HP Fortis 11" G9 Q Chromebook [QC, 4/8GB], Clamshell, 11" touchscreen (optional)
- HP Elite c640 14" G3 Chromebook [Pentium, 8GB], Clamshell, 14" touchscreen (optional)

Advanced Use

- HP Pro c640 G2 Chromebook [i3/5/7, 8/16GB], Clamshell, 14" touchscreen (optional)
- HP Elite c640 14" G3 Chromebook [i3/5/7, 8/16GB], Clamshell, 14" touchscreen (optional)
- HP Elite c645 14" G2 Chromebook [Ryzen 3/5/7, 8/16GB], Clamshell, 14" touchscreen (optional)
- HP Chromebox G3 [i3/i5/i7, 8/16/32GB] Mini PC
- HP Elite Dragonfly 13.5" Chromebook [i3/i5/i7, 8/16/32GB], Convertible, 13.5" touchscreen



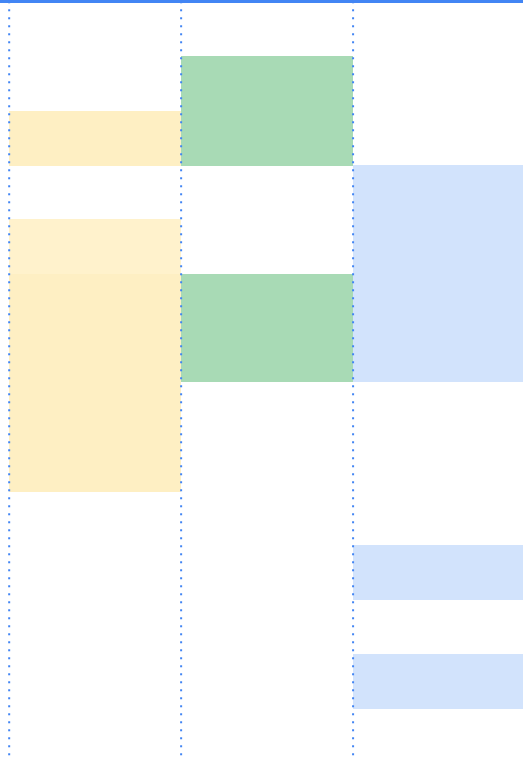
KEY

- Devices that have WiFi 6 enabled SKUs
- Devices that have an LTE/5G SKU

Stylus compatible | G = Garaged stylus included

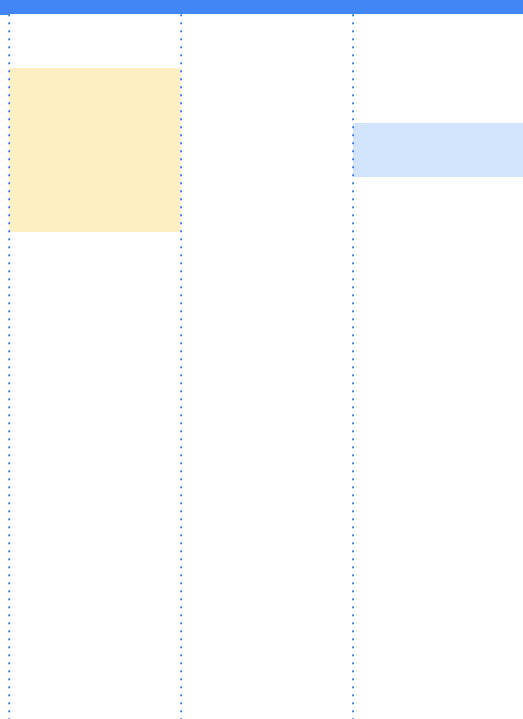
Learning Anywhere

- 100e 2nd Gen MTK 2 [Kompanio 500, 4GB] Clamshell, 11.6" screen
- 100e 3rd Gen [3015Ce, N4500, 4GB] Clamshell, 11.6" screen
- 100e 4th Gen [Kompanio 520, 8GB] Clamshell, 11.6" screen
- 300e 3rd Gen [3015Ce, 4GB] Convertible, 11.6" touchscreen
- 300e 4th Gen [Kompanio 520, 8GB] Convertible, 11.6" touchscreen
- 500e 3rd Gen [N5100/6000, 4/8GB] Convertible, 11.6" touchscreen
- 500e 4th Gen [N100/200, 4/8GB] Convertible, 12.2" touchscreen
- S380-14 [Kompanio 520, 8GB] Clamshell, 14" screen
- Flex 5i [i3, 4GB] [Celeron, 4GB] Convertible, 14" touchscreen
- ThinkPad C14 Chromebook Gen 1 [i3, 4GB] Clamshell, 14" touchscreen (optional)
- Duet [Kompanio 500, 4GB] Detachable, 11" touchscreen
- 14e Chromebook Gen 2 [3015Ce, 4/8GB] Clamshell, 14" touchscreen (optional)
- Flex 5i [i3/Pentium, 4GB] Convertible, 14" touchscreen
- ThinkCentre M60q Chromebox [Celeron, 4GB] Mini PC



Advanced Use

- 14e Chromebook Gen 3 [i3 N305, 8GB] Clamshell, 14" touchscreen (optional)
- ThinkPad C14 Chromebook Gen 1 [i3/5/7, 8/16GB] Clamshell, 14" touchscreen (optional)
- Flex 5i Chromebook [i3, 8GB] Convertible, 14" touchscreen
- Flex 5 [i3/5, 8GB] Convertible, 14" touchscreen
- ThinkCentre M60q Chromebox [i3/5, 8/16GB] Mini PC

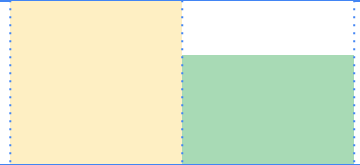


KEY Devices that have WiFi 6 enabled SKUs Stylus compatible | G = Garaged stylus included
 Devices that have an LTE/5G SKU



Learning Anywhere

- Galaxy Chromebook 2 [Celeron, 4GB] Convertible, 13.3" touchscreen
- Galaxy Chromebook Go [N4500, 4GB] Clamshell, 14" screen
- Galaxy Chromebook 2 360 [N4500, 4/8GB] Convertible, 12.4" touchscreen



Advanced Use

- Galaxy Chromebook 2 [i3, 8GB] Convertible, 13.3" touchscreen



KEY

- Devices that have WiFi 6 enabled SKUs
- Devices that have an LTE/5G SKU
- Stylus compatible | G = Garaged stylus included