

[HPE ProLiant
Next Gen](#)[HPE ProLiant
Gen11 Family](#)[HPE ProLiant
Express](#)[HPE Compute
Acceleration](#)[Is Gen11 the
right fit?](#)**Quick** Navigation Buttons

HPE ProLiant Navigation Guide:

Transform your customer business with the next generation of Compute Systems. Learn more about the benefits of upgrading to HPE ProLiant Gen11 and navigate through the most competitive server offerings, all available with your preferred Distributor.



Use the navigation buttons (Top-Right) for a shortcut to your desired page!

Flexibility to meet your customers' price/performance needs to create unique selling opportunities:

HPE ProLiant Solutions

Off the shelf (BTO)

Customized in Factory (CTO)

Level of Customization

Gen10

Best For:
SMB and transactional customers, or those with rack-level power constraints.

Performance and value

Gen10 Plus

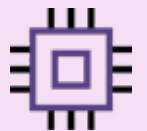
Best For:
Customers with general purpose multi workload environments (virtualized / containerized applications)

Balanced workload optimization

Gen11

Best For:
Demanding performance and GPU accelerated workloads (AI/ML, data analytics, high performance databases)

Highest workload performance & longest availability



Accelerate workload performance & Modernize workload efficiency

Gen11 vs Gen8

Gen11 vs Gen9

Gen11 vs Gen10/10+

Cost Savings



➔ **90%** Better Price/Performance

Power Savings

6x More Performance per kW

65% Power savings per year

25% More Performance per kW

Space Savings

11:1 Gen8 to Gen11 server consolidation

8:1 Gen9 to Gen11 server consolidation

43% Reclaimed rack space

HPE ProLiant Gen11 Family

HPE ProLiant Next Gen

HPE ProLiant Gen11 Family

HPE ProLiant Express

HPE Compute Acceleration

Is Gen11 the right fit?

Tower Optimized

Edge Optimized

Density Optimized

Accelerator Optimized

Blade Optimized

Tower, 1P

HPE ProLiant ML110 Gen11

4th Gen Intel® Xeon® Scalable Processor



4U, 2P

HPE ProLiant ML350 Gen11

4th Gen Intel® Xeon® Scalable Processor



1U, 1P

HPE ProLiant DL320 Gen11

4th Gen Intel® Xeon® Scalable Processor



1U, 1P

HPE ProLiant DL325 Gen11

4th Gen AMD EPYC™ Processor



Storage Optimized

2U, 1P

HPE ProLiant DL345 Gen11

4th Gen AMD EPYC™ Processor



1U, 2P

HPE ProLiant DL360 Gen11

4th Gen Intel® Xeon® Scalable Processor



1U, 2P

HPE ProLiant DL365 Gen11

4th Gen AMD EPYC™ Processor



2U, 2P

HPE ProLiant DL380 Gen11

4th Gen Intel® Xeon® Scalable Processor



2U, 2P

HPE ProLiant DL380a Gen11

4th Gen Intel Xeon Scalable processor



2U, 2P

HPE ProLiant DL385 Gen11

4th Gen AMD EPYC™ Processor



Big Data Optimized

2U, 4P

HPE ProLiant DL560 Gen11

4th Gen Intel® Xeon® Scalable Processor



HPE Synergy 480 Gen11

4th Gen Intel® Xeon® Scalable Processor



Cloud Optimized

1U, 1P

HPE ProLiant RL300 Gen11

Ampere® Altra® and Ampere® Altra® Max



Broad Workload Ecosystem

Private and Hybrid Cloud

Containers

AI/ML & Data

VDI

VMware vSphere,
Microsoft Azure Stack HCI

HPE Ezmeral,
Red Hat, SUSE

Microsoft, Oracle, MongoDB,
Cassandra, TigerGraph

Citrix VAD, HP Anyware,
VMware Horizon

Available now!

Fully configured **Compute Solutions** to deliver outcomes at the most **Competitive Price***

*Up to **10% better Price** than a traditional BTO+Option integration

HPE DL20 Gen10+

ProLiant Express Small Server

SKU: P63678-B21



Ideal for small virtualized environments or small offices!

Form Factor	8SFF
Rack Height	1U
RAM	32G
CPU	1 x E-2336 / 6C / 2.9Ghz
Drives	2 x 480GB SATA RI SSD

Estimated Price*

\$1,700*

HPE DL360 Gen10

ProLiant Express Medium Server

SKU: P63679-B21



Ideal for virtualization & databases!

Form Factor	8SFF
Rack Height	1U
RAM	64GB
CPU	1 x 4208 / 8Core / 2.1Ghz
Drives	2 x 480GB SATA RI SSD
Adapter	10GB

Estimated Price*

\$2,750*

HPE DL380 Gen10

ProLiant Express Large Server

SKU: P63680-B21



Ideal for large databases, analytics, and mission critical workloads!

Form Factor	8SFF
Rack Height	2U
RAM	196GB
CPU	1 x 5218 - 16C / 2.3Ghz
Drives	2 x 480GB SATA RI SSD
Adapter	10GB

Estimated Price*

\$4,750*

*Estimated pricing based on these exact configurations - Final price will vary, check with your Distributor

Quote Today with your preferred Distributor:



TD Synnex Contact

HPE Compute Acceleration

HPE ProLiant Next Gen

HPE ProLiant Gen11 Family

HPE ProLiant Express

HPE Compute Acceleration

Is Gen11 the right fit?

Best available in Stock

Accelerate your business with the right products at the right price right now!



SKU: P54649-001 SKU: P44722-001 SKU: P21449-001 SKU: P21788-001 SKU: P55250-B21 SKU: P23578-B21 SKU: P50751-B21

	Micro G10+ <small>v2 E-2314 16G NHP</small>	ML30 g10+ <small>E-2314 1P 16G 8SFF</small>	ML110 g10 <small>4210R 1P 16G 8SFF</small>	ML350 G10 <small>4210R 1P 16G 8SFF</small>	DL325 G10+ <small>v2 7313P MR416i-a</small>	DL360 G10 <small>4210R 1P 16G NC 8SFF</small>	DL380 G10 <small>4210R 1P 32G NC 8SFF</small>
Form Factor	4 LFF NHP	8SFF	8SFF	8SFF	8SFF	8SFF	8SFF
Rack Height					1U	1U	2U
RAM	16G	16G	16G	16G	32G	16G	32G
CPU	1 x E-2314 / 4Core - 2.8Ghz	1 x E-2314 / 4Core - 2.8Ghz	1 X 4210R - 10C / 2.4Ghz	1 X 4210R - 10C / 2.4Ghz	1 x 7313P AMD EPYC - 16C / 3.0gHZ	1 X 4210R - 10C / 2.4Ghz	1 X 4210R - 10C / 2.4Ghz
Adapter	10GB	2X1GB	4X1GB Embedded	10GB	1GB	1GB	1GB

Estimated Price* **\$1,081*** **\$951*** **\$2,426*** **\$2,679*** **\$3,288*** **\$2,348*** **\$2,368***

*Estimated pricing based on these exact configurations - Final price will vary, check with your Distributor

Sell and Earn with Compute!

Sell any of the Gen10, Gen10+ & Gen11 family products to earn **HPE Engage & Grow points!**

HPE Engage & Grow

Partner Rep - Incentives for Partner Reps via Engage&Grow

SPIF Per Server Unit:		Gen 10	Gen 10+	Gen11
BTO	intel	\$50	\$50	\$100
	AMD		\$100	\$100
CTO	intel			\$100
	AMD		\$100	\$100

Trade-Up - Incentives for End Customers trading old equipment

Trade-Up Program

New HPE Server replacing:	Rebate	BONUS!
a) Qualified HPE Server	\$300 Per Server (Up to 60)	\$300 Including Compute Ops Manager (COM)
b) Qualified Competitor Server	\$1000 Per Server (Up to 60)	\$500 Including Compute Ops Manager (COM)

Is Gen11 the right fit for you?

HPE ProLiant Next Gen

HPE ProLiant Gen11 Family

HPE ProLiant Express

HPE Compute Acceleration

Is Gen11 the right fit?

Find out with **2 simple** questions:

What is most important to the customer?

Choose 1: Best price/performance and/or high performance **OR** lowest acquisition price?

Best price/performance and/or high performance is most important

Performance is most important for

- 1) Demanding workloads: AI/ML, VDI, Data Analytics, & Data Solutions
- 2) Certain Segments: finance, healthcare, media & entertainment
- 3) Customers concerned about performance headroom for the future

Recommend

HPE ProLiant Gen11

Gen11 compared to Gen10 Plus:

- **Up to 24% price/performance benefits for VMware customers**
- **Accelerate performance of workloads like VDI, data solutions, and compute for AI:** 2.25X more memory bandwidth with high-performance DDR5 memory
- **Accelerate GPU, storage, and network-intensive workloads:** PCIe Gen5 provides more lanes for improved GPU, storage, and network performance; increased GPU density
- **Power efficiency:** Up to 43% more power efficient

Lowest acquisition price is most important

Lowest acquisition price may be especially important for SMBs

Ask

Do they need to continue to purchase the same configuration past end of 2023 (Gen10) or mid 2024 (Gen10 Plus)

If yes, recommend

If no, recommend

HPE ProLiant Gen10 / Gen10 Plus / v2

- For workloads that benefit from increased performance (e.g., Hybrid Cloud & Containers), Gen10 Plus may offer better price/performance vs Gen10
- **NOTE:** HPE does not recommend customers consider Gen10 / Gen10 Plus / v2 for new projects given the anticipated EOL timeframes for those platforms
 - e.g., End of Sales for HPE ProLiant DL360/DL380 Gen10 is 4/30/2024