

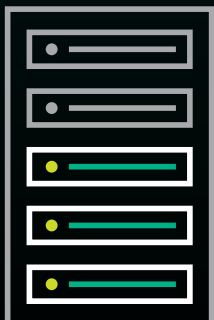
Elevate Your Customers' IT Experience with TD SYNEX and HPE GreenLake

DELIVER AN AS-A-SERVICE EXPERIENCE FOR YOUR CUSTOMERS' TOP WORKLOADS WITH TD SYNEX AND HPE GREENLAKE

Transform how you deliver IT services with the agility and financial attractiveness of cloud computing, combined with the security and control of on-premises IT, through TD SYNEX and HPE GreenLake's as-a-service offerings. Our unique solution empowers your customers to rapidly adapt to growth and bring new applications to market swiftly — within minutes, not months, without the traditional delays in expanding IT infrastructure and budgets. Let's explore how we achieve this.



SEAMLESS SCALABILITY AND FLEXIBILITY Tailored Capacity with Local and Cloud Buffering



We collaborate with you to accurately predict your customers' current and future IT needs, setting a minimum commitment level while also preparing a local buffer of IT resources. This buffer is your customers' safety net, accessible whenever needed, ensuring they're always a step ahead of demand spikes. Moreover, this capacity can seamlessly extend into the public cloud, guaranteeing flexibility and scalability without upfront overinvestment.

PAY-PER-USE ECONOMICS

Cloud-like Scalability

The traditional approach of purchasing IT infrastructure often leads to underutilization or capacity shortages, impacting both financials and operational efficiency. TD SYNnex, in partnership with HPE GreenLake, introduces a consumption-based model that precisely aligns your expenditure with actual usage. This pay-per-use model, complemented by detailed metering and capacity planning, means your customers only pay for what they consume, ensuring optimal financial and operational efficiency.



FINANCIALS

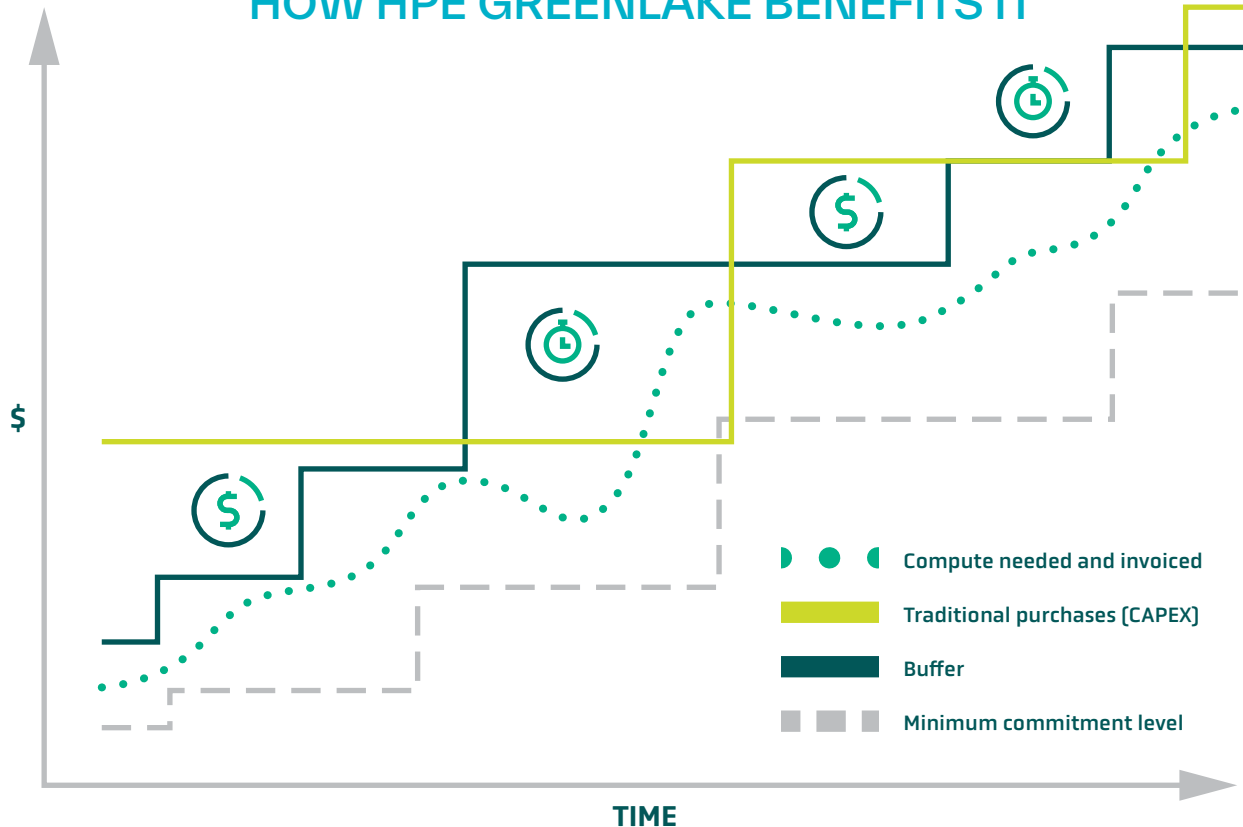
Assets purchased to meet future capacity needs are sitting idle tying up capital, increasing cost.



TIME TO MARKET

Assets not purchased early enough to meet the increase in demand, and the business misses new opportunities or delays key new initiatives.

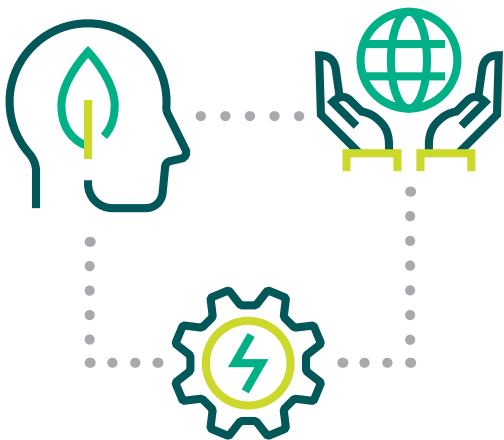
HOW HPE GREENLAKE BENEFITS IT



INNOVATION WITH HPE GREENLAKE

Harness the Power of AI in Your Customers' Infrastructure

Integrate cutting-edge AI capabilities into your customers' IT services with HPE GreenLake. This offering enables your customers to leverage artificial intelligence to unlock new insights, enhance decision-making, and automate processes. With HPE GreenLake AI, infrastructures become smarter, adapting to needs in real-time and driving innovation without the need for significant upfront investment in specialized resources.



ELEVATE SUSTAINABILITY EFFORTS with HPE GreenLake

With HPE GreenLake, your customers can significantly reduce their environmental footprint while improving operational efficiency. This program focuses on delivering energy-efficient technologies and solutions that lower carbon emissions and support sustainability goals. By choosing HPE GreenLake, your customers not only gain access to state-of-the-art IT solutions but also contribute to a healthier planet.

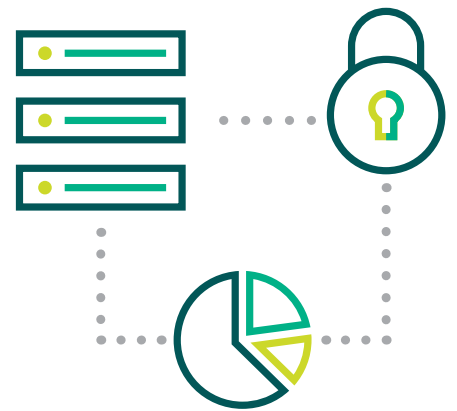


TD SYNnex AND HPE COMPLETE CARE An Expert Extension of Your IT Team

HPE Complete Care, through TD SYNnex, is a tailored suite of services to help IT better operate what they have today while evolving toward a hybrid infrastructure. It provides extra stability, agility, and expertise with personalized, enterprise-grade-level service and support from an assigned technical support team. HPE GreenLake also includes a customer portal that displays capacity usage data so you can assess performance and cost in real time and always plan ahead.

SECURITY AND CONTROL Reduce the Cost and Risk to Business

HPE GreenLake offers operational efficiency and stability with the right mix of cloud and on-premises IT. IT can keep key workloads on-premises to stay in control of security, privacy, latency, compliance, while controlling and using the public cloud when appropriate.



Ready to Get Started?

Empower your customers with the agility, security, and control they need for their IT environments. For more information, [contact us](#) now.

[CONTACT US](#)