



TD SYNnex Is Advancing Customer AI Outcomes With the Intel® Geti™ Platform



The TD SYNnex Difference

TD SYNnex is a global technology distributor and solutions aggregator that brings together the most well-known names in IT and emerging technology innovators. TD SYNnex is now distributing the Intel® Geti™ platform software for trial and purchase to empower customers to quickly develop and implement computer vision models.

Why Vision AI and Computer Vision?

Vision AI offers businesses a competitive advantage by extracting business value from visual data. Insights from visual data can be used to improve product quality, reduce costs and provide opportunities for innovation. It is a versatile technology with applications across various industries, from streamlining manufacturing to enhancing healthcare and everything in between. Vision AI offers capabilities such as object recognition, anomaly detection and pattern analysis.



The Intel® Geti™ Platform: Powerful AI for Everyone

The new Intel Geti software platform enables users to build computer vision models in a fraction of the time and with less data. With the Intel Geti platform, users can:

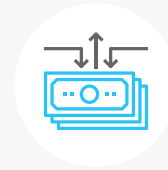
- **Build models faster with active learning:** Active learning selects the most informative data samples to achieve working models with fewer data points, saving time and resources.
- **Expedite data tagging with smart annotations:** Smart annotations help you label data with drawing features and AI-assisted labeling, including the capability to segment and detect objects with a click with the Segment Anything Model (SAM).
- **Simplify and automate the development pipeline with SDK support for REST API:** SDK support for REST API enables you to easily and efficiently integrate the Intel Geti platform with your existing workflows and tools.
- **Output production-ready models for OpenVINO toolkit:** OpenVINO toolkit allows you to deploy AI models across a wide range of Intel® architectures, such as CPUs, GPUs, VPUs and FPGAs.



Explore new markets and generate new revenue streams by building computer vision models for various applications and industries



Solve customer problems and exceed customer expectations by building custom AI models for computer vision

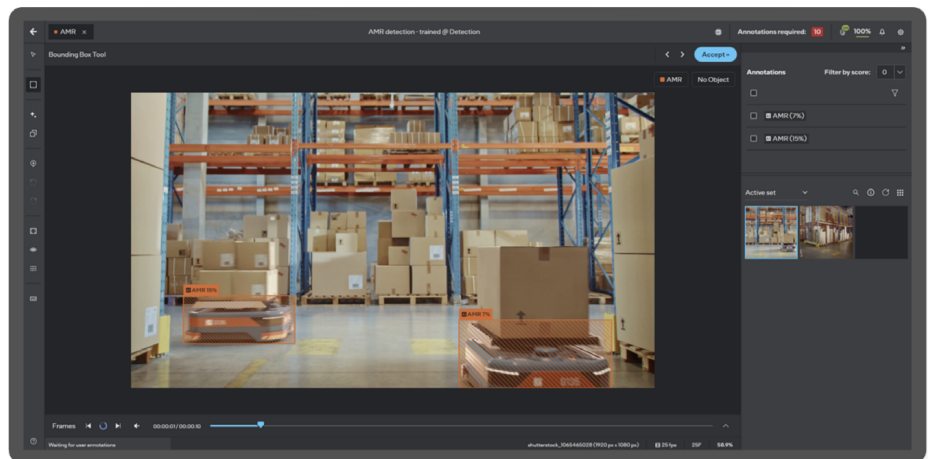


Save time and money by using features that ease data labeling, model training and optimization tasks

We know that our enterprise and ISV partners are increasing their AI solution offerings and are looking for enablement and training tools to support that rapid growth and address the challenges that often come up. This platform fills a critical role in that process, with the Intel Geti platform as part of our Destination AI program, we are adding another innovative, useful solution to the robust AI tools, enablement and services that we are providing for our partners.”

Lisa McGarvey,
Vice President, Solutions Aggregation, Data and IoT, TD SYNnex

TD SYNnex is proud to be the first distributor to bring the groundbreaking Intel® Geti™ platform to the partner ecosystem. Explore the Intel® Geti™ platform, available today in the U.S. and EMEA, get started by contacting GetiSales@tdsynnex.com!



[TD SYNnex Website](#)

[Learn More](#)

[TD SYNnex Intel Vendor Page](#)

[The Intel® Geti™ Platform Homepage](#)

