



SOLUTIONS FOR BUSINESS: PERSONAL WORKSPACE

An Interactive Guide



ROLL OVER EACH PRODUCT SPOT FOR DETAILS

THE NEW PERSONAL WORKSPACE

As the workforce redistributes into a more lasting hybrid model, a one-size-fits-all workspace solution does not exist. That's why Logitech creates human-centered technology solutions that help people create and collaborate effectively from anywhere. Our complete desktop solutions will help your team do their best work while enjoying a more flexible and satisfying work experience.

As a trusted leader in enterprise technology solutions, we understand the challenges that your company faces. We strive to present innovative solutions that are easy to set up and use, simplifying the manageability challenges created by a distributed workforce.

LOGITECH ADVANTAGE

- **EQUITY:** Our solutions unleash a more inclusive and equitable work experience for all.
- **PERFORMANCE:** Different types of work require different tools; we design with the end user in mind.
- **COLLABORATION:** We enable authentic connection and co-creation, fueling healthy hybrid cultures.
- **COMPATIBILITY:** Our plug-and-play solutions are certified for the most popular meeting platforms.
- **SECURITY:** Our ecosystem is designed with security and manageability in mind, keeping power in IT's hands.
- **SUSTAINABILITY:** We are committed to doing right by the planet in everything we do.

Everything you need to equip employees for a productive workday from anywhere.

PRODUCTS

Logitech has an extensive product suite to improve productivity in the hybrid workspace.

[Mice >>](#)

[Keyboards >>](#)

[Headsets >>](#)

[Webcams >>](#)

[Logi Dock >>](#)

[Presentation Devices >>](#)



LOGI BOLT TECHNOLOGY

Logi Bolt combines *Bluetooth*® Low Energy wireless technology Security Mode 1, Security Level 4 with additional Logitech security features to reduce vulnerability when devices are paired to a Logi Bolt USB receiver.

- **Connect via *Bluetooth* or Logi Bolt USB receiver.**
- **Compatible with most operating systems.**
- **Pair up to six mice and keyboards to one receiver.**

SOFTWARE

Logitech software enhances the manageability of our products, so IT can better manage the distributed workforce. Logitech software also gives employees the option to customize their products to better suit each individual workflow.

[Logitech Sync >>](#)

[Logi Options+ >>](#)

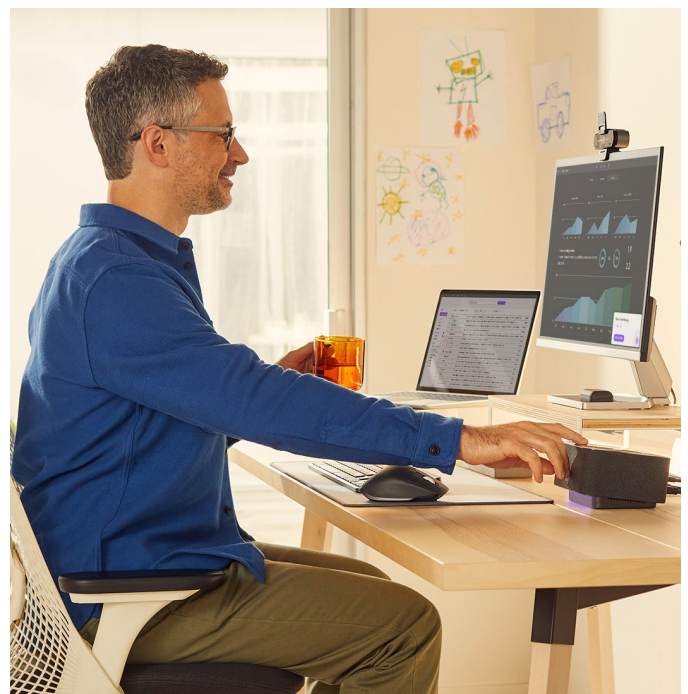
[Logi Tune >>](#)

SERVICES

Logitech services provide peace of mind. With comprehensive service plans and extended warranties, our solutions will do the job right, or we will make it right.

[Logitech Select >>](#)

[Extended Warranty >>](#)



Logitech makes it easy to equip your entire team with keyboards and mice, whether they work from home, in the office, on-the-go, or any combination of the three. Our plug-and-play solutions just work, simplifying setup for your employees and lessening the load of IT administrators. Equip your team with mice and keyboards to improve employee experience and create a more productive personal workspace.

PERFORMANCE

THE MX MASTER SERIES FOR BUSINESS



MX KEYS FOR BUSINESS

Users can type on a keyboard crafted for stability and precision where every keystroke is fluid, natural, and accurate. If they can think it, they can master it.

Logi P/N: 920-010116



MX ANYWHERE 3 FOR BUSINESS

MX Anywhere 3 for Business provides ultimate versatility and remarkable performance. It's the compact mouse designed for mobile work—from home office to café to airport lounge.

Logi P/N: 910-006204 (Graphite)

Logi P/N: 910-006215 (Pale grey)



MX KEYS MINI FOR BUSINESS

A wireless keyboard that combines advanced functionality with compact minimalist design.

Logi P/N: 920-010594 (Graphite)

Logi P/N: 920-010595 (Pale grey)



MX KEYS COMBO FOR BUSINESS

The MX Master 3 for Business and MX Keys for Business combo with palm rest. It's the ultimate key to productivity, giving users with specialized workflow needs the power to truly master what they make.

Logi P/N: 920-009292



MX MASTER 3 FOR BUSINESS

Designed for users with advanced, specialized workflow needs. Customize MX Master 3 for Business and configure every action for each unique workflow.

Logi P/N: 910-006198



MX KEYS COMBO FOR BUSINESS | GEN 2

The upgraded MX Master 3S for Business and MX Keys for Business combo with palm rest. Enjoy quiet click technology and 8000 dpi tracking for enhanced performance.

Logi P/N: 920-010923



MX MASTER 3S FOR BUSINESS

Upgraded for enhanced productivity and comfort, the MX Master 3S for Business boasts quiet click technology and 8000 dpi tracking.

Logi P/N: 910-006581



MX KEYS MINI COMBO FOR BUSINESS

Modern, minimalist design meets business performance providing more space to work and increased productivity.

Logi P/N: 920-011048

ERGONOMIC

THE ERGO SERIES FOR BUSINESS



ERGO K860 SPLIT KEYBOARD FOR BUSINESS

A science-driven, ergonomic keyboard that promotes a more relaxed, natural typing experience designed for hours of comfortable use.

Logi P/N: 920-010175



LIFT FOR BUSINESS

An approachable, inviting, and easy-to-use vertical mouse, ideal for small to medium hands. It's designed for comfort and well-being at the desk to help people feel better while working.

Logi P/N: 910-006491 (Graphite)
Logi P/N: 910-006492 Left (Graphite)
Logi P/N: 910-006493 (Off-white)



M575 WIRELESS TRACKBALL FOR BUSINESS

With science-driven design and easy thumb control, this wireless trackball mouse is engineered to reduce hand movement, providing hours of comfort.

Logi P/N: 910-006197 (Graphite)
Logi P/N: 910-006437 (Off-white)

MAINSTREAM

THE SIGNATURE SERIES FOR BUSINESS



SIGNATURE MK650 COMBO FOR BUSINESS

Designed for all-day comfort. The keyboard's integrated palm rest and familiar keystrokes complement the soft thumb area and rubber side grips of the mouse, all helping to make working hours feel less like work.

Logi P/N: 920-010909 (Graphite)
Logi P/N: 920-011018 (Off-white)



SIGNATURE M650 FOR BUSINESS

With smarter scrolling and comfortable grip, this wireless mouse is designed to improve productivity, comfort, and overall employee experience.

Logi P/N: Large 910-006346 (Graphite)
Logi P/N: Large 910-006347 (Off-white)
Logi P/N: Medium 910-006272 (Graphite)
Logi P/N: Medium 910-006273 (Off-white)



Help employees block out distractions and get work done wherever they are. Logitech headsets are compatible with the most popular video conferencing platforms, so you can trust they will fit into your ecosystem.



ZONE TRUE WIRELESS

Bluetooth earbuds that provide outstanding audio quality while keeping out unwanted noise with advanced beamforming technology and hybrid ANC.

Logi P/N: 985-001081 (Graphite)



ZONE WIRELESS (PLUS)

Bluetooth headset designed to help your team work from anywhere with exceptional sound, flip-to-mute mic, and Qi wireless charging. ANC helps reduce distractions even in noisy workspaces. Seamlessly switch between smartphone and computer. Zone Wireless Plus includes a Logitech Unifying receiver, which can connect up to six Logitech Unifying wireless peripherals.

Logi P/N: 981-000913

Logi P/N: 981-000853 Microsoft Teams

Logi P/N: 981-000918 (Plus version)

Logi P/N: 981-000858 Microsoft Teams (Plus version)



ZONE WIRED

USB wired headset that delivers premium audio for focus time and reliable call clarity with noise-canceling dual mic technology. Generously sized 40 mm drivers deliver full-bodied bass to create satisfying sound for video calls.

Logi P/N: 981-000876

Logi P/N: 981-000871 Microsoft Teams



ZONE WIRED EARBUDS

Wired earbuds with noise-canceling, boomless dual mic technology that captures voice in complete clarity. Always stay connected with convenient plug-and-play connections: 3.5 mm, USB-C, and USB-A.

Logi P/N: 981-001012 (Graphite)

Logi P/N: 981-001008 Microsoft Teams (Graphite)



ZONE VIBE WIRELESS

This wireless headset is professional enough for the office and casual enough for working from home with dual omni-directional mics and beamforming technology to reduce distracting noises. Zone Vibe Wireless offers multi-point *Bluetooth* and battery life that provides up to 18 hours of talking time on a single charge.

Logi P/N: 981-001198 (Graphite)

Logi P/N: 981-001156 Microsoft Teams (Graphite)

Supply your team with Logitech webcams to help them collaborate from anywhere. With some employees in the office, some at home, and some scattered in between, innovative solutions from Logitech enable effective teamwork. Show your employees in their best light without worrying about deployment or compatibility.



BRIO

Premium 4K webcam with HDR and Windows Hello support. Packed with innovative technology, this webcam adjusts to accommodate any lighting condition. The Brio webcam features 5X HD zoom, variable field of view (90°/78°/65°), and dual stereo mics.

Logi P/N: 960-001105



BRIO 505

An easy-to-use webcam offering RightSight auto-framing¹ and Show Mode to enable the sharing of real-life projects and notes on the desktop, along with easy IT management. The Brio 505 webcam features auto light correction, 4X digital zoom, variable field of view (90°/78°/65°), and dual noise-reducing mics.

Logi P/N: 960-001411



C930e

An advanced 1080p business webcam that delivers high-resolution video in virtually any environment with H.264 support. The C930e webcam features 4X HD zoom, 90° field of view, and dual stereo mics.

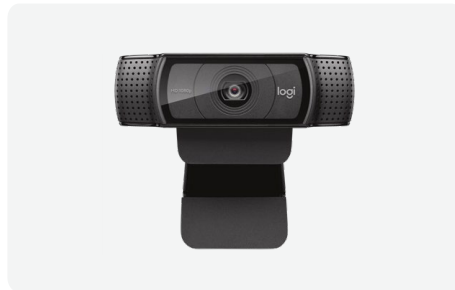
Logi P/N: 960-000971



C925e

Enhanced 1080p business webcam with HD autofocus for true-to-life clarity. The C925e delivers professional quality video for all-day use with H.264 support, 78° field of view, and dual stereo mics.

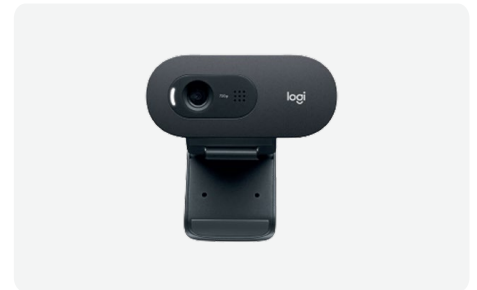
Logi P/N: 960-001075



C920e

Look professional from anywhere with this 1080p business webcam that's easy to use and perfect for mass deployment. The C920e webcam features 78° field of view and dual stereo mics.

Logi P/N: 960-001401



C505e

Crisp, smooth, and colorful video with auto light correction that adjusts to your meeting space. This webcam offers HD 720p and a long-range mic up to 3 m. The C505e features 60° field of view and a mono mic.

Logi P/N: 960-001385

¹This feature requires Logi Tune. Logi Tune not available for ChromeOS.

Logi Dock is an all-in-one docking station with meeting controls and a built-in speakerphone that works seamlessly with leading video conferencing platforms. Designed for personal workspaces, Logi Dock makes joining meetings as easy as one touch and delivers crystal-clear audio for calls. It's simple to set up, connects desktop peripherals, and eliminates workspace clutter for more productive workdays.



DECLUTTER THE DESKTOP

Logi Dock connects up to five USB peripherals and up to two monitors¹ while offering laptop charging up to 100 watts. With fewer cords and dongles, Logi Dock makes room for cleaner workspaces and better workdays.

¹USB to DisplayPort adapter is required to support dual Mac monitors with screen extension.

Logi P/N: 986-000025 (Graphite)

Logi P/N: 986-000015 Microsoft Teams (Graphite)

Logi P/N: 986-000031 (White)



PRESENTATION DEVICES

Discover our advanced digital pointers for in-person, virtual, and hybrid work.



SPOTLIGHT PRESENTATION REMOTE

Spotlight is specifically designed to keep people engrossed. With three advanced pointing modes, presenters can engage the audience, even in a hybrid workspace.

Logi P/N: 910-004984 (Silver)

Logi P/N: 910-004860 (Gold)

Logi P/N: 910-004654 (Slate)



R500s PRESENTATION REMOTE

The R500s enables impactful presentations with slide navigation up to 65 feet away from the computer and a red laser pointer for emphasis.

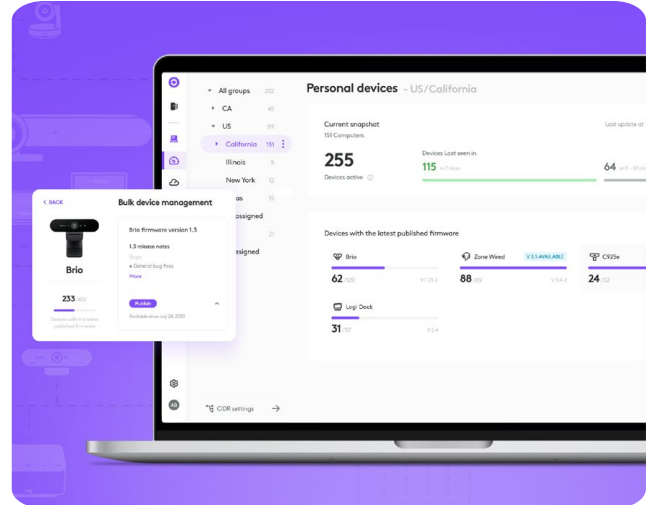
Logi P/N: 910-006518

Logitech software is integral to the personal workspace. Software enhances Logitech products by ensuring a consistent, unified, and customizable experience across the distributed workforce.

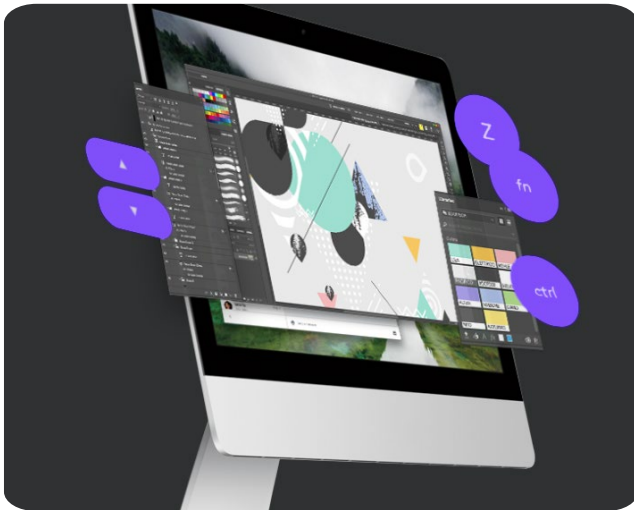
MANAGEABILITY

LOGITECH SYNC

Sync works alongside your service provider admin tool to help you deploy and manage your entire device ecosystem. Whether employees are in the office, at home, or somewhere else, Sync helps everyone stay connected by ensuring their Logitech personal workspace solutions are healthy and up to date. And it allows you to quickly configure features in meeting rooms to best suit your organization's needs.

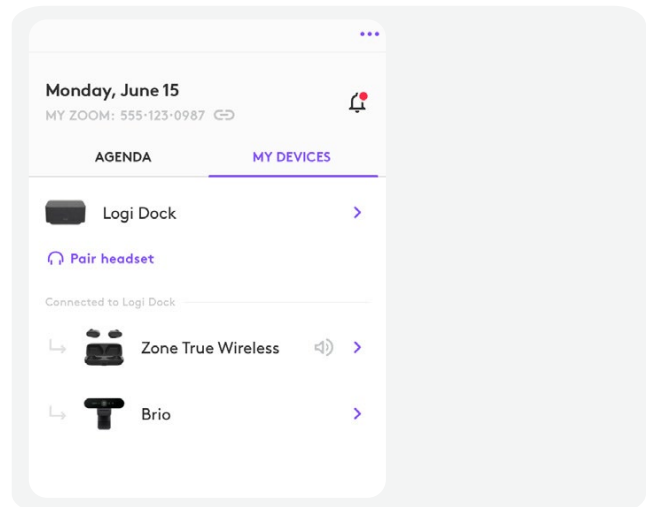


CUSTOMIZATION



LOGI OPTIONS+

This is the powerful, easy-to-use, next-gen application that enables customization for Logitech mice and keyboards so your team can work how they want.



LOGI TUNE

This app puts webcam, headset, and Logi Dock settings at the user's fingertips for more focused and productive collaboration.

Logitech services provide peace of mind. Our solutions will do the job right, or we'll make it right.

LOGITECH SELECT

Logitech Select is a comprehensive service plan offering 24/7 support, a dedicated Customer Success Manager,¹ product replacement, accelerated RMA, onsite spares,¹ and advanced Logitech Sync analytics through integration with ServiceNow.²

¹ Available with purchase of a service plan for 50+ rooms.

² Available for users of Logitech Sync.



EXTENDED WARRANTY

With an extended warranty,³ your Logitech purchases are protected against defects for up to five years from the purchase date. Extended warranties are available for either one year or three years beyond the original Logitech manufacturer's limited two-year warranty.

³ Terms and conditions apply. Not available in all countries. Contact your reseller.



ELEVATE YOUR PERSONAL WORKSPACES

Logitech designs personal workspace solutions that make equitable working experiences possible for everyone. We help teams work better together, from anywhere, without compromising on quality, productivity, or the creativity that comes from collaboration.

Contact your Logitech Account Rep for more information.

[Logitech.com/business/personal-workspace](https://www.logitech.com/business/personal-workspace)